

AT THE HEART WE ARE  
LEARNING  
FAMILIES  
COMMUNITY  
GENEROSITY  
FAITH



---

# SACRED HEART SCHOOLS ATHERTON



## TABLE OF CONTENTS

TRUSTEES AND ADMINISTRATORS	3
LETTER FROM THE DIRECTOR OF SCHOOLS	4
LETTER FROM THE BOARD CO-CHAIRS	5
FINANCIALS	7
HIGHLIGHTS AND FAST FACTS	8
AT THE HEART OF LEARNING	10
AT THE HEART OF FAMILIES	14
AT THE HEART OF COMMUNITY	16
AT THE HEART OF GENEROSITY	18
AT THE HEART OF FAITH	20
AT THE HEART OF THE FUTURE	22
CAPITAL CAMPAIGN GIFTS AND PLEDGES	24
ANNUAL FUND PARTICIPATION	27
ANNUAL FUND DONORS BY GIVING SOCIETY	28
ANNUAL FUND DAY VOLUNTEERS, PLEDGE DAY	40
SHAKE, RATTLE AND ROLL AUCTION 2009	41
SCHOLARSHIP AND SPECIAL PURPOSE GIFTS	45
TOWER CIRCLE	46
TRIBUTE GIFTS AND MEMORIAL GIFTS	47
ENDOWMENT	48



*Gator Nation*

---

# *Trustees and Administrators*

## **BOARD OF TRUSTEES**

ANNE MARIE HOLLOWAY, CO-CHAIR (SH NEWTON '73)

MINDY ROGERS, CO-CHAIR

MONA BAILEY

MAUDE BREZINSKI (SH NOROTON '72)

ROBERTA CAMPBELL

MIKE CHILD

JOHN COGAN

BARBARA DAWSON, R.S.C.J.

RICHARD A. DIOLI

MARIE-LOUISE FLICK, R.S.C.J.

MARRITJE GREENE

TIM HALEY

FREDRIC HARMAN

RON JOHNSON

JOHN KERRIGAN

STEPHANIE LANE

MANNY MACEDA

MIKE MOHRMAN

KENNETH OLIVIER

STEPHEN RUDOLPH

CHICK RUNKEL

MARY PAT RYAN, R.S.C.J.

SUSANNE SUTHERLAND

JANICE WILKINS

MICHAEL WISHART

## **TRUSTEE EMERITI**

ROBERT GLOCKNER

JOHN N. HUNTER

## **Alumni Representative**

Leana Giannini (SHP '75)

## **Parent Representatives**

Maryan Ackley

Renee Hannebrink

Beverly Wheat

## **Faculty and Staff Representatives**

Marie "Dupi" Cogan (SHE '67)

Douglas Lowney (SJSJ '84, SHP '88)

## **Development Committee**

Maude Brezinski, Chair (SH Noroton '72)

Maryan Ackley

Leana Giannini (SHP '75)

Marritje Greene

Renee Hannebrink

Beverly Wheat

## **Annual Fund Strategic Planning Committee**

Joanie Cattermole, Chair

Sara Steppe, Chair

Peter Coleman (SHP '88)

Lisa Henske

Debra McLean

Lori Nawn

Betsy Plaschke

Bob Plaschke

Chris Surowiec

## **Campaign Cabinet**

Kristina Homer, Chair

Lauren Koenig, Chair (SJSJ '73, SHP '77)

Maude Brezinski (SH Noroton '72)

Ed Cluss

Tom Fallon

Cathy Friedman Duane

Marritje Greene

Stephanie Harman

Anne Marie Holloway (SH Newton '73)

John Kerrigan

Jim McLean

Mindy Rogers

Mary Rudolph

Chick Runkel

Paul Sallaberry

Sandi Thompson

## **School Administrative Council**

Richard A. Dioli, Director of Schools

James Everitt, Principal Sacred Heart Preparatory

Bridget Collins, Principal St. Joseph's School of the Sacred Heart

Cee Salberg, Principal St. Joseph's School of the Sacred Heart Preschool & Kindergarten

Sterrin Bird, CFRE, Director of Institutional Advancement

M'Lis Greenfield Berry (SJSJ '77, SHP '81)

Director of Development

Sandy Dubinsky, Chief Operations Officer

Susan Raffo, Chief Financial Officer

Sister Martha Roughan, Director of Formation to Mission

Dora Arredondo-Marrón, Director of Equity, Justice, Multicultural Education

Wendy Quattlebaum, Director of Admissions

Beth Tornabene, Special Projects Coordinator

Jennifer Hawks, Executive Assistant

to the Director of Schools

---

**RICHARD A. DIOLI**  
Letter from the Director of Schools



Dear Sacred Heart Community,

At the Heart of a Sacred Heart Education lies a rich heritage that has been passed down from our founding Mothers. It is the heart of learning, the heart of families, the heart of community, the heart of generosity, and especially the heart of faith that has guided Sacred Heart Schools, Atherton, for over 100 years.

Saint Madeleine Sophie, founder of the Society of the Sacred Heart, treasured the children who attended her schools. Her vision in the 1800s was to educate as many children as possible to love God, to surround themselves with a respect for the intellect and beauty, to act for justice and peace, to serve others, to promote an atmosphere that builds community, to show respect and acceptance of others, and to grow in self-knowledge and self-discipline.

Because of your generosity to the Annual Fund, Auction and Capital Campaign, we are able to continue to live out Saint Madeleine's dream to educate the whole child, where learning takes place not only in the classroom, but also in all of the relationships and experiences gathered during their educational

period with Sacred Heart Schools. Your support goes beyond the classroom and hits the core of what it means to belong to a Sacred Heart Community, where both scholarship and values matter.

Thank you for your continued belief and support of the mission of the Religious of the Sacred Heart.

Sincerely,

A handwritten signature in black ink that reads "Richard A. Dioli". The signature is written in a cursive, flowing style.

Richard A. Dioli  
Director of Schools

---

**ANNE MARIE HOLLOWAY (SH NEWTON '73) AND MINDY ROGERS**  
Letter from the Board Co-Chairs



Dear Sacred Heart Community,

The theme of this Annual Report is “At the Heart,” and it goes to the core of what distinguishes Sacred Heart Schools, Atherton (SHS). For over 100 years, SHS has been dedicated to the Sacred Heart mission and heritage. It provides the foundation upon which the school rests. The spirit of the school’s founders, combined with energy from the Silicon Valley culture, has fostered a dedication to progress, pushing SHS to evolve as the world changed. We have thrived for so long because our values always guided those changes. The result is an institution that is uniquely relevant and extraordinary. Thankfully, that sense of purpose remains as strong as ever and truly is at the heart of SHS.

We are happy to report that 2008 - 2009 was a highly successful year. Rich Dioli and his team managed well through economic adversity and stayed on track to implement the Strategic Plan. At this point a number of the initiatives have either been implemented or are in process, and the benefits are already becoming visible and evident. Examples include the impact of our expanded college counseling resources, more course offerings, the increased support and facilities for our sports teams, the growth in the middle school, and our new and remodeled academic buildings.

The SHS experience gets high marks from our students, as indicated by the excellent morale on campus. Continuing a multi-year trend, SHS’s reputation among prospective students and parents gets stronger every year. Despite the economy, enrollment is up, applications are growing and incoming classes are getting stronger.

Sacred Heart Preparatory (SHP) enjoyed success on many fronts. Our graduating seniors were admitted to a wonderful set of colleges and universities. SHP also saw unprecedented athletic achievement for both boys’ and girls’ teams in a variety of sports - it was a great year to be a Gator fan! Bridget Collins did a good job in her first year as principal of St. Joseph’s School of the Sacred Heart (SJSH). As often comes with changes in leadership, she has been taking a fresh look at all aspects of SJSH and has exciting ideas for the future. St. Joseph’s preschool and kindergarten is a cornerstone of SHS and we are proud of its consistent excellence.

We continue to attract terrific talent to the school. Sterrin Bird joined SHS as Director of Institutional Advancement in April. She previously held a senior position in development at University of California, San Francisco, and has significant capital campaign experience. She is already making an impact. Her arrival

completes Rich's senior administrative team and leaves us well positioned with an outstanding group of school and department leaders. We are continuing to attract and retain excellent faculty and addressing our value proposition to all SHS employees.

We are making major progress on the Master Plan for the campus. During the year, students had the experience of watching SHP's new Michael J. Homer Science and Student Life Center being constructed. This fall, the Center will provide critical classrooms, science labs, and assembly and dining areas on the SHP campus.

As most of you know, there are additional unmet infrastructure needs. In particular, many of the SJSB classrooms are over 50 years old and fall far short of what is needed. A plan has been developed for a new lower and middle school campus that will dramatically enhance academic instruction, extra-curricular opportunities, and make needed improvements in many aspects of life on campus. We look forward to sharing the plans with you in the coming year.

The school remains strong financially. Rich and his team made a number of decisions, including freezing/reducing their own salaries, to offset the impact of the economy. The priority was to protect the student experience. As tuition covers only 83 percent of our costs, support from expendable gifts, event proceeds and the endowment are critical to avoiding deficits, and these other sources of income were collectively down nine percent from last year. These are crucial dollars as we strive to balance tuition, financial aid, class size and employee compensation. Nevertheless, due to expense management, slightly higher enrollment and heroic efforts by many staff and volunteers on the development front, SHS finished with a positive operating


result. And the impact on students was indiscernible. Our endowment is currently \$33 million. While it declined 22 percent for the academic year, it continues to retain a high level of liquidity and performed better than its benchmarks.

The Capital Campaign has raised \$55,079,329 to date, but more is needed. Funding for the building of the lower and middle school campus will be a priority for the coming year, and there are key initiatives at each of the schools that still require support. We are truly blessed given the support we receive, especially in light of the state of the economy.

Last, we want to thank everyone who has graciously donated their time and energy to the school. We are deeply grateful to the trustees who have completed their service and are leaving the Board: Roberta Campbell and Ken Olivier. We will miss them greatly.

After four years, this is our last year as Co-Chairs. Anne will be Chair next year. The Board of Trustees is thrilled to pass the torch to someone whose intelligence, wisdom, and passion for the school is so clearly evident.

We appreciate your continued support and dedication to the school.



Mindy Rogers & Anne Marie Holloway (SH Newton '73)  
Co-Chairs, Board of Trustees

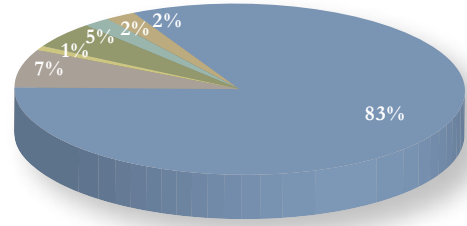
---

## OPERATING REPORT JULY 1, 2008 TO JUNE 30, 2009

(in millions unaudited)

### OPERATING REVENUES

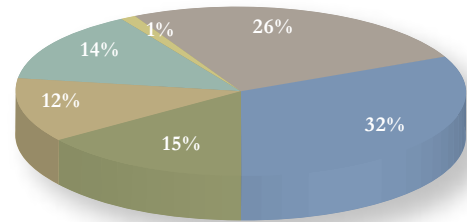
Tuition and Fees	\$27.5	83%
Annual Fund	2.3	7%
Summer Programs	.4	1%
Funding from Endowment	1.5	5%
Other (rentals, after-school care)	.8	2%
Auction 2008 - "It's Show Time!"	.8	2%
<b>Total Revenues</b>	<b>\$33.3</b>	



---

### OPERATING EXPENSES

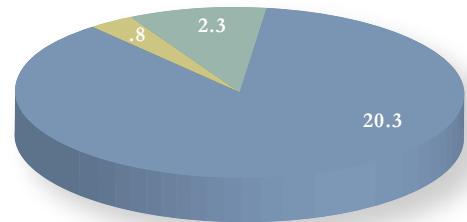
St. Joseph's School of the Sacred Heart	\$ 8.6	26%
Sacred Heart Preparatory	10.6	32%
Plant and Maintenance	4.9	15%
Financial Assistance	3.9	12%
Administration	4.7	14%
Summer Programs	.4	1%
<b>Total Expenses</b>	<b>\$33.1</b>	



---

### FUNDRAISING REPORT

Annual Fund	\$ 2.3
Capital, Endowment and Restricted Gifts	20.3
Auction 2009 - Shake, Rattle & Roll	.8
<b>Total Fundraising Revenue</b>	<b>\$23.4</b>



Note: Amounts include gifts and new pledges and do not include payments on previously reported pledges.

# Highlights and Fast Facts

## HISTORY

ROMAN CATHOLIC, INDEPENDENT,  
CO-EDUCATIONAL SCHOOL

ONLY ROMAN CATHOLIC SCHOOL  
ON THE PENINSULA WITH  
PRESCHOOL THROUGH GRADE 12

ONLY CO-EDUCATIONAL HIGH SCHOOL  
IN THE U.S. SACRED HEART NETWORK  
FOUNDED 1898 BY  
SAINT MADELEINE SOPHIE BARAT

DRIVEN BY FIVE GOALS :  
FAITH, INTELLECT, SOCIAL JUSTICE,  
COMMUNITY, PERSONAL GROWTH

## ENROLLMENT

1070 TOTAL

## STUDENT DIVERSITY

23 PERCENT OF OUR STUDENTS  
IDENTIFY THEMSELVES AS ASIAN  
AMERICAN, HISPANIC AMERICAN,  
MIDDLE EASTERN AMERICAN,  
AND MULTI-RACIAL

60 PERCENT ARE CATHOLIC

27 PERCENT ARE FINANCIAL  
NEEDS-BASED RECIPIENTS

## FACILITIES

64-ACRE CAMPUS WITH NINE CLASSROOM BUILDINGS

CAMPUS DIVIDED INTO SJSB PRESCHOOL AND KINDERGARTEN,  
LOWER SCHOOL (GRADES 1 TO 5), MIDDLE SCHOOL (GRADES 6 TO 8)  
AND SHP (GRADES 9 TO 12)

STATE-OF-THE-ART LIBRARY

CAMPBELL CENTER FOR THE PERFORMING ARTS

MICHAEL J. HOMER SCIENCE AND STUDENT LIFE CENTER

FIVE ATHLETIC FIELDS

AQUATIC CENTER WITH AN OLYMPIC-SIZE SWIMMING POOL

TENNIS COMPLEX AND TWO GYMNASIUMS

ALL-WEATHER TRACK AND FOOTBALL FIELD

FIELD HOUSE THAT SEATS OVER 1,000

## SMALL CLASSES

PRESCHOOL AND KINDERGARTEN STUDENT-TO-TEACHER RATIO – 12:1

LOWER SCHOOL – 16:1

MIDDLE SCHOOL – 16:1

HIGH SCHOOL – 15:1

## ACCREDITATION AND AFFILIATIONS

WESTERN ASSOCIATION OF SCHOOLS AND COLLEGES (WASC)

CALIFORNIA ASSOCIATION OF INDEPENDENT SCHOOLS (CAIS)

WESTERN CATHOLIC EDUCATION ASSOCIATION (WCEA)

NATIONAL ASSOCIATION OF INDEPENDENT SCHOOLS (NAIS)

# Highlights and Fast Facts

## CURRICULUM

PRESCHOOL THROUGH GRADE 12 PRESENTS CHALLENGING ACADEMICS WHERE STUDENTS USE CUTTING-EDGE RESOURCES TO APPLY CONCEPTS

SUBJECTS ARE TAUGHT THEMATICALLY FOR REAL WORLD APPLICATION

SELF-INDIVIDUALIZED INSTRUCTION

A VARIETY OF HONORS AND ADVANCED PLACEMENT COURSES

99 PERCENT OF SENIORS ACCEPTED TO FOUR-YEAR UNIVERSITIES

19 PERCENT OF THE CLASS OF 2009 WAS RECOGNIZED IN THE NATIONAL MERIT COMPETITION

## STUDENTS ACT ON REAL WORLD PROBLEMS

MORE THAN 50,000 HOURS LOGGED EACH YEAR TO LOCAL AND INTERNATIONAL PROJECTS AND PROGRAMS THROUGH SERVICE LEARNING

SOME SERVICE LEARNING PROJECTS PARTNER WITH OTHER SACRED HEART NETWORK SCHOOLS

## ATHLETICS

GRADES 4 TO 8 OFFER TEN DIFFERENT INTERSCHOLASTIC SPORTS AND FIVE SEASONAL SPORTS FOR GIRLS

GRADES 9 TO 12 OFFER TEN SPORTS FOR GIRLS AND ELEVEN FOR BOYS

OVER 90 PERCENT OF THE LOWER AND MIDDLE SCHOOL STUDENT BODY PARTICIPATES IN THE NO-CUT ATHLETIC PROGRAM

80 PERCENT OF STUDENTS PARTICIPATE IN AT LEAST ONE SPORT THROUGHOUT HIGH SCHOOL

## FACULTY AND STAFF

PRESCHOOL AND KINDERGARTEN:  
FACULTY, 11; STAFF, 3

LOWER AND MIDDLE SCHOOLS:  
FACULTY, 48; STAFF, 14

SACRED HEART PREPARATORY:  
FACULTY, 70; STAFF, 31

ADMINISTRATION: STAFF, 43

OPERATIONS: STAFF, 31

73 PERCENT OF OUR CLASSROOM TEACHERS HOLD ADVANCED DEGREES

## CAPITAL CAMPAIGN

“LIVING OUR MISSION,  
BUILDING OUR FUTURE”

THIRD CAMPAIGN IN SCHOOL HISTORY

280 GIFTS RECEIVED

100 PERCENT PARTICIPATION BY BOARD OF TRUSTEES

# AT THE HEART OF LEARNING



*Michael J. Homer Science and Student Life Center*

---

# *“Teachers are formed here as much as the students.”*

CONNIE SOLARI



*Connie Solari,  
Director of Senior Independent  
Studies, English Instructor*



*Guy Letteer,  
High School Science Instructor*



*Donna Gilboa,  
High School History Instructor*

**AT THE HEART OF LEARNING** Sacred Heart Schools provides the pathway for students to discover a deep respect for intellectual values. Last year, we established three chairs in the departments of English, Science and History as the beginning of a program that eventually will endow chairs in all subjects. Inspired by the generosity of our donors, the endowed chairs will enable these departments to continue to provide a rigorous education that inspires critical thinking and a lifelong love of learning, while at the same time harnessing creativity and technology for the individual needs of each student.

This year we honored three individuals from each of the three endowed departments who exemplify the academic excellence at SHS: Connie Solari, Guy Letteer and Donna Gilboa.

Connie Solari is the English honoree and has been a Sacred Heart Preparatory faculty member for 38 years. She believes one of the most valuable aspects of a Sacred Heart education is the interconnectedness that is fostered when students live out the Goals and Criteria.

“Nothing exists without its correlation to everything else,” she says.

Solari reflects what she sees in the panoply of students who walk past her bright windowed office. Effusive and knowledgeable about a world of humanities topics from Italian poetry to French Surrealism, she is also head of Educators of the Sacred Heart of Jesus (ESCJ). It is their stated purpose to affirm faculty and staff adherence to the mission of a Sacred Heart education, and to help illuminate the character and heritage of the Religious of the Sacred Heart of Jesus. In her “day job,” she teaches two English classes and oversees the Seniors Honors Independent Study, which allows seniors to design a course of study about a subject they are intensely interested in.

Being a history teacher for over 40 years— 35 of them at Sacred Heart— has given History honoree Donna Gilboa ample opportunity to learn from her students and her travels. She brings history alive by traveling the world to visit the places she teaches about and those she wants to learn more about. She even maintains her connections with SHS alumni, recently teaching the daughter of one of them, giving her work its own sense of personal history.

In her teaching, Gilboa constantly encourages her students to question themselves and others and the world in which they live. Her teaching methods are lectures and discussion while her method of inquiry is Socratic. As such, her classes are a forum that expands her students’ understanding of the world they live in, and more important, how it came to be.

“My mission is not to teach them the names and dates and other cold facts. It is to push them to analyze the reasons behind those facts and to inform themselves and question the adults,” she says.

Gilboa says she saw the value of endowment firsthand when SHS' Lucas Family Library opened in 2000.

“Without a good library, how can you validate education?” Gilboa asks.

Endowment isn't just for families with millions: it is for people who “believe in the mission and can see it in the lives of their children,” Gilboa says. “It's not for me. And it's not for the name on the door. It's for the students.”

Science honoree and physics instructor Guy Letteer is in his element in the school's new Science and Student Life Center with the language of science scribbled on a white board behind him. The environmentally friendly Homer Center, named in memory of former Trustee and benefactor Michael J. Homer, includes eight state-of-the-art classrooms, assembly space for 700, a student lounge and cafeteria, plus two outdoor basketball courts and courtyards with seating.

Letteer appreciates that the endowment has helped free up time to create the FIRST (For Inspiration and Recognition of Science and Technology) Robotics Team at Sacred Heart Preparatory. Students gather in a school basement to engineer a robot that has to perform a specific task and compete against school robots nationwide. The Robotics Team has grown from six to 20 students in its fourth year. More important than the competition itself, Letteer says, is the teamwork and sociability it draws out of students.

Letteer's personal experience and understanding of the impact of these endowments echoes the gratitude of the entire school when he says, “The generosity and confidence that I felt with this endowment has instilled the greatest pride and confirmed the most respect for my vocation as a teacher.”



*Campbell Center for the Performing Arts*

# AT THE HEART OF FAMILIES



*Grandparent/Special Person Day*

---

*"There is a sense of community here where everybody takes care of each other."*

CATHY FRIEDMAN DUANE



*Mrs. Cathy Friedman Duane  
and Mr. Jon Duane*



*From left to right:  
Caren, Michael, Patrick, Erin,  
Charlie, Jack, Cathy and Jon*

**AT THE HEART OF FAMILIES** Cathy and Jon Duane have six reasons why they value a Sacred Heart Schools education, and until just recently they were all on the SHS campus.

Jack, 18, SHP Class of 2009, is a freshman at Stanford University; Caren, 16, is a SHP junior; Charlie, 14, and Michael, 12, are in the eighth and seventh grades respectively in the Middle School; and Patrick, 9, and Erin, 8, are in the fourth and second grades respectively in the Lower School.

The Duanes, who live close by, came to SHS by recommendation of friends and family sixteen years ago. They believe their children's lives are enhanced by the schools focus on SHS's Goals and Criteria in a myriad of ways.

"Our children are very conscious of how lucky they are to be at Sacred Heart," says Cathy "There is that general value of knowing how lucky you are and sharing that is pervasive at Sacred Heart."

They are also impressed with the sense of community and strong values that SHS forms, although each may be played out in simple, everyday actions such as good manners and a growing awareness of needs in the world.

Caren and Jack both did service learning missions to Peru; Caren has been to Fiji to tutor and build houses, and Jack helped out in New Orleans following Hurricane Katrina during his 2005 Christmas vacation. Watching their siblings, the younger Duanes want to do the same. "They choose to go on these missions because of the giving community they find themselves in," Jon explained.

When she isn't working part-time, Cathy sits on the SHS Board of Trustees and is on the Board of the Boys and Girls Clubs of the Peninsula. When Jon isn't traveling for business, he is active in coaching community youth sports, cheering his own kids on the field and off and likes to take the kids to school. Despite the 24/7 effort of managing a large family, the Duanes find SHS activities enhancing their family life.

"For us, Sacred Heart and St. Joseph's are the center of our world," says Jon, adding jokingly that they do have "other lives."

Thinking about their six kids, the Duanes can crystallize their SHS experience in illustrative statements:

"There is something for everyone here. There is a teacher for everyone . . . a coach for everyone," says Cathy. "There is a lot more to Sacred Heart than just educating your child academically," says Jon.

# AT THE HEART OF COMMUNITY



*SHS Service Learning in the Community*

---

*"I look forward to going to work here every day."*

JESUS GONZALEZ



*Cee Salberg,  
Principal, St. Joseph's Preschool  
& Kindergarten*



*Jesus Gonzalez,  
Physical Plant Manager*



*Joan Burdick,  
Retired, Fine Arts Instructor*

**AT THE HEART OF COMMUNITY** Sacred Heart Schools prides itself on the diversity of its students, but it can also relish the diversity of service by its faculty and staff, especially this year's recipients of the St. Madeleine Sophie Award.

From a retired alumna who shaped the drama program to a principal who introduces the Goals and Criteria to the most impressionable of students, and to a multi-generational employee who ensures the safety of all who work and study here, SHS says "Thank you."

- Cee Salberg, principal of St. Joseph's Preschool and Kindergarten. Salberg started at the Montessori Preschool and Kindergarten in 1988 as a teacher and shortly thereafter took the helm as principal which she remains today. Colleagues describe Salberg as someone who gives early support and ensures teachers have the most up-to-date child development information in their teaching. When asked what led her to develop a career here, Salberg refers to the young students she personally greets each day. "It is the mission of the school. With young children you are starting fresh and hope to instill the mission in them so that they'll go out and live it," Salberg says.
- Jesus Gonzalez, physical plant manager, operations. Overseeing nearly two dozen employees and responsible for 64 acres of classroom, athletic, and administrative facilities, Gonzalez is part of a large family who has served SHS in various positions. "The nuns used to babysit me when I was five," Gonzalez recalls about the time he would visit his father, who worked as a janitor for 22 years. His tireless dedication to keeping all aspects of the campus in tip-top shape, beginning in 1997 with his first position, is fueled by his view of SHS as family. "I look forward to going to work here every day. It feels good when people value your work," he says.
- Joan Burdick, retired 27-year faculty member and SHS alumna, Class of 1949. Dividing her time between St. Joseph's Middle and Lower schools and Sacred Heart Preparatory, Burdick helped students from the first to twelfth grades develop responsibility, a thirst for knowledge, and love of teamwork through theater, music and dance. As chair of the Fine Arts department at SHP from 1990 until she retired in 2001, Burdick expanded drama, performing, and studio arts classes from five classes to twenty. She campaigned for the campus's current state-of-the-art performing arts center, but calls her biggest achievement her students. "One of my greatest joys is to see talent and to nurture it," she says.

# AT THE HEART OF GENEROSITY



*Annual Fund Parent Volunteer, Chris Surowiec*

---

*“We appreciate the continuum of a traditional yet state-of-the-art education.”*

CYNTHIA NOURSE



*Jim and Cynthia Nourse with  
Dr. Ralph Bishop*



*Thomas (SHP '02), and  
Susan (SHP '05) Nourse*

**AT THE HEART OF GENEROSITY** Sacred Heart Schools and one of its families, the Nourses, have continuum in common. While Sacred Heart educates on a continuum of faith and academic excellence through every formative year of a student's life, the Nourses have a continuum of annual giving. And it's a long one - 21 years straight.

Cynthia Nourse is modest while being recognized and congratulated as one of SHS's most consistent donors to the Annual Fund. The Annual Fund makes up seven percent of SHS's operating budget and provides the unrestricted dollars that SHS needs to support its programs after tuition.

“We are people who appreciate excellence,” says Nourse of her family, which includes husband Jim, son Thomas, 25, and daughter Susan, 22. The Nourse children attended Sacred Heart Schools preschool through twelfth grade.

“We appreciate the continuum of a traditional yet state-of-the-art education. To me, it was critical for the whole child,” she says.

Cynthia and Jim learned generosity by growing up with faith and seeing their parents donate to the church, arts, science and health. Cynthia's father, Dr. Ralph M. Bishop, has been a donor to SHS for a number of years as well.

“To us education is freedom. Moral values are freedom. Anything that empowers people is a very high priority to us,” she says.

The Nourses believe their children's individual learning styles and interests received the highest priority at every grade at Sacred Heart, but especially at Sacred Heart Preparatory.

Thomas, (SHP '02), helped develop the school's Intranet and used his knowledge at Carnegie Mellon, where he earned a Bachelor of Science in Computer Science in 2006 and a Master of Science in Software Engineering and Development Management in 2008. He is a senior software engineer at Google.

Daughter Susan, (SHP '05), went through English Chair Connie Solari's Senior Honors Independent Study program, where she gained experience in long distance project management. She's taken these skills to Stanford University, where she's a product design major in the engineering department. Over the summer, Susan worked with a PhD student in the mechanical engineering department to try to develop an ergonomically safe silk loom for hand weavers living in rural areas outside Hyderabad, India.

Even though their children have graduated, they have college tuition to pay, and the economy has taken a downturn, the Nourses keep giving and say they have no plans to stop. “Like everyone, we have had to cut back in some areas. But this is one area that would be our last choice,” Cynthia says. When the Nourses donate to SHS they think of their children's education, how they've made lifelong friends, and developed in areas of faith, community and intellect that will shape the rest of their lives.

“We think of our children and we hope it continues for other children,” Cynthia says.

# AT THE HEART OF FAITH



*Director's Day Retreat*

---

*“We teach, what is distinctively Catholic and then we broaden the circles out.”*

PETER WALKER



*Sister Roughan,  
Director of Formation to Mission*



*Peter Walker,  
Religious Studies Instructor*

**AT THE HEART OF FAITH** To understand more about how SHS educates with faith, one need only talk to Sister Roughan, Director of Formation to Mission, or religious studies instructor Peter Walker. There are no better examples of how to instill the development and history of SHS faith into our everyday working life, nor two better guides for the religious journeys of our faculty, parents and students.

“I see my teaching as ministry— as part of the ministry of the Catholic Church,” says Walker, whose classroom is filled with books on all different religions. “I see it as very academic. It is the principle thing we do.”

Walker grew up in Newton, Massachusetts, where he rode his bicycle through the Newton Country Day School campus, a member of the Network of Sacred Heart Schools, not knowing that he’d one day teach at a Sacred Heart school. But before joining us, Walker worked at Stanford University’s campus ministry from 1989 to 1992, and was attracted to SHS because of its small classes and devotion to faith. He joined the faculty in 1993.

“We start by teaching what is distinctively Catholic and then we broaden the circles out,” says Walker.

For instance, if a student is researching their family religious history and discovers relatives of other religions, he encourages the student to investigate those different beliefs and rituals. Teaching both freshmen and seniors, he brings the study of faith alive by delving into such topics as how the movement for social justice affects different parts of the world. He finally brings his course of study full circle by encouraging students to examine how their everyday life decisions, such as their choice of a career, can mirror SHS values.

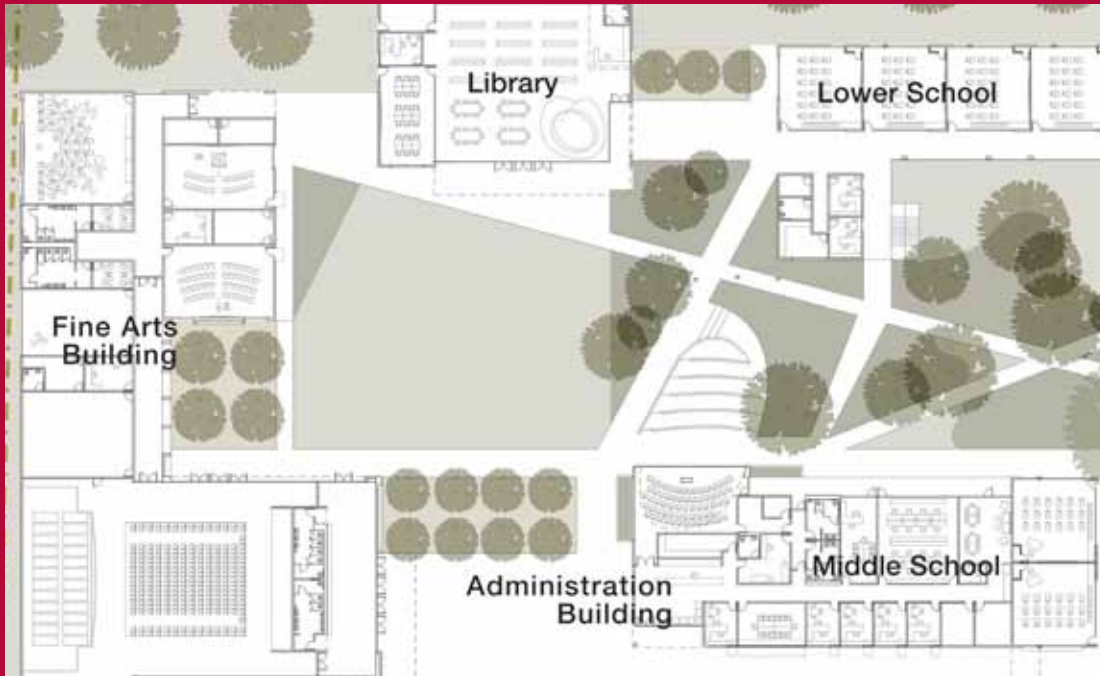
While the majority of Catholic institutions have only recently begun to appreciate the value of learning about and even embracing the world’s diverse religions, at SHS it’s been a long-standing tradition. One of Sister Roughan’s favorite stories about SHS founder Madeleine Sophie Barat recounts that when asked why she was sending RSCJ to Algiers in 1842, Barat responded, “So they can be better Muslims and we can be better Christians.”

Sister Roughan has a bit of the founder’s peripatetic streak herself. Sacred Heart Schools, Atherton is her eighth SHS Network school. In her travels, she has helped students, parents and faculty at an inner-city school in Chicago and the homeless in Washington, DC.

Sister Roughan’s arrival in August 2008 was met with a great deal of anticipation and enthusiasm. In her first year here, she’s introduced retreats for busy people, prayer services, and even role-playing sessions where faculty take on the personas of Barat, Philippine Duchesne and Jane Erskine Stuart, so new instructors can learn more about the Network’s history.

When asked about her goal for her mission here at Sacred Heart, she replies directly, “I want to develop new ways for the adults in our community to understand more deeply the mission of the Society of the Sacred Heart so they can pass it on to the next generation.”

# AT THE HEART OF THE FUTURE



*St. Joseph's New Campus - Fall '09 Draft Rendering*

---

**LIVING OUR MISSION, BUILDING OUR FUTURE** Sacred Heart Schools, Atherton is currently in the midst of an exciting Capital Campaign; the first phase of which has materialized in the opening of the new Michael J. Homer Science and Student Life Center at the high school, named in memory of former Trustee and benefactor, Michael J. Homer. The Homer Center includes eight new science labs, assembly space for 700, a student lounge, a new cafeteria and faculty offices, an outdoor courtyard with seating, plus two outdoor basketball courts. Campaign funds will also support the re-alignment of all athletic fields. Additional renovations have also transformed the Sigall Building and McGanney Sports Center to create three new fine arts classrooms, faculty offices, and a robotics lab.

The next phase of the campaign is underway and includes funding for new lower and middle school facilities at SJSB to replace outdated facilities. The new buildings will be fully modern, age-appropriate facilities that optimize learning, personal growth, and a sense of community among students. The campaign will continue to raise funds for the School's endowment which embraces three initiatives – faculty excellence, 21st century learning, and financial aid. This will ensure our faculty and staff have the support and professional development they need, our teaching methods and curriculum are relevant to today's fast-changing and innovative world, and that SHS can admit the most capable students regardless of their financial means.

**N. STERRIN BIRD, CFRE**

Letter from the Director of Institutional Advancement



It is my sincere honor and privilege to join the Sacred Heart Family. I have been overwhelmed by the commitment, generosity and kindness of spirit that abound across campus. This is an especially exciting and important time here and the energy is palpable. Let me add my thanks for all that you continue to do to support Sacred Heart Schools, Atherton.

Each day as I work with you to realize our ambitious goals, I am reminded of the words of Janet Erskine Stuart, R.S.C.J.: “We must remember that it is better to begin a great work than to finish a small one.” We have incredible vision and plans for the future, and all of our dreams will come true because of the unparalleled commitment, generosity and faith of this Sacred Heart Family.

I hope you have enjoyed this report and the new narrative format. We have done our very best to be accurate, and apologize in advance for any errors or omissions we may have made. If we have omitted your name, spelled it incorrectly, listed you in the wrong class year or otherwise failed to acknowledge your gift to Sacred Heart Schools correctly, please let me know so that we may correct it. Should you have any other comments about this annual report, I hope you will share them by calling or writing me at the address below. I look forward to hearing from you.

From the Heart,

A handwritten signature in black ink that reads "N. Sterrin Bird". The signature is fluid and cursive, written on a light-colored background.

N. Sterrin Bird, CFRE  
Director of Institutional Advancement  
150 Valparaiso Avenue  
Atherton, CA 94027  
Phone: 650.473.4090  
Email: sbird@shschools.org

**Living *our* Mission  
BUILDING *our* Future**

.....  
CAMPAIGN *for* SACRED HEART SCHOOLS  
.....

---

CAPITAL CAMPAIGN GIFTS AND PLEDGES RECEIVED JULY 1, 2008- JUNE 30, 2009

Dr. & Mrs. Ken Abe  
Mr. & Ms. Ofer Agam  
The Aitken-Young Family  
Ms. Kristen Alexander  
Mr. & Mrs. Harold Anderson  
Mr. Robert Angcay  
Mr. & Mrs. Jesus Angel  
Anonymous (5)  
Mr. & Mrs. Bob Antonacci  
Ms. Kendra Armstrong (SHP '03)  
Mr. & Mrs. Mark Askins  
(Mary Lucier Askins SJSH '79, SHP '83)  
Mr. & Mrs. Brian Avery  
Ms. Mariette Bacon  
Mr. & Mrs. Peter Bailey  
Ms. Karen Bailey  
Mr. G. Leonard Baker Jr. & Mrs. Mary  
Anne Nyburg Baker (SJSH '81)  
Mr. Refugio Balderrama  
Ms. Sylvia Baldwin  
Mrs. Julie Ball  
Mr. & Mrs. Thomas Barnds Sr.  
Mr. Robert Barnes  
Mr. & Mrs. David Barry  
(Elaine Berra Barry SHP '87)  
Mrs. Marisa Beck  
Mr. & Mrs. Brian Bell  
Mr. & Mrs. John Bellack  
Ms. Rosaria Bercow  
Mr. Mark Bernstein & Dr. Jamie Sullivan  
Ms. M'Lis Greenfield Berry  
(SJSH '77, SHP '81)  
Mr. & Mrs. Anthony Bertolacci  
Ms. Kathleen Biehl  
Mr. & Mrs. Roger Blandford  
Mr. & Ms. Norman Blears  
Ms. Eileen Bocci  
Mr. & Mrs. Patrick Boesen  
Ms. Bette Bohler  
Mr. William Bonnell  
Mrs. Stephanie Bowe Ullman  
Mr. & Mrs. Charlie Bozzo  
Mr. & Mrs. Philip Brezinski  
(Maude Nolan Brezinski SH Noroton '72)  
Mr. & Mrs. David Brody  
Ms. Diane Brugos  
Ms. Suzanne Bryan  
Mr. & Mrs. Charlton Buckley  
Mr. & Mrs. Michael Budelli (SHP '97)  
Mr. Luis Buenrostro &  
Mrs. Emma Girron  
Ms. Jennifer Buonafede  
Mr. Jonathan Burke  
Ms. Victoria Burns  
Mr. & Mrs. Preston Butcher  
Ms. Ruth Cady  
Ms. Barrie Callender (SJSH '74, SHP '78)  
The Callinan Family  
Ms. Darva Campbell  
Mr. H. Keir Campbell & Ms. Cee Salberg  
Ms. Catherine Cannata  
Mr. & Mrs. Pedro Cardenas  
Mr. & Mrs. Rod Cardamone  
Ms. Sonia Cardenas  
Mr. & Mrs. Robert Carlson  
Mrs. Irma Case  
Mr. & Mrs. Martin Cattaneo  
(Cherie "Cookie" Conway Cattaneo  
SH Broadway '67)  
Mr. Jeffrey Chambers &  
Mrs. Andrea Okamura  
Mr. & Mrs. Bayardo Chamorro  
Mr. & Mrs. Michael Child  
Mr. & Mrs. Claudio Chiuchiarelli  
Mr. & Mrs. Peter Clark  
Mr. & Mrs. Edward Cluss Jr.  
Mr. John Cole & Ms. Wendy Parker  
Ms. Bridget Collins  
Ms. Sharon Collins (Lone Mountain '69)  
Mr. & Mrs. Ronald Conway  
(Stuart Hall '66)  
Mr. & Mrs. John Corpos  
Mr. Brian Cropper (SHP '09)  
Sister Barbara Dawson  
Mr. & Mrs. Manuel DeBattista  
Mr. & Mrs. Michael Deggelman  
Mr. & Mrs. Timothy Deppmeier  
Mr. & Mrs. Mark DeZutti  
Ms. Jessika Diamond  
Mr. & Mrs. Richard A. Dioli  
Sister Kathleen Dolan (SH Greenwich '56)  
Mr. Jon Duane &  
Mrs. Cathy Friedman Duane  
Mr. & Mrs. Mike Dubinsky  
Mr. & Mrs. Benoit Dubuisson  
Mr. Alejandro Duenas  
Mr. & Mrs. Bruce Dunlevie  
Mr. & Mrs. James Dyer (Christine Lussier  
Dyer SHE '63, SHP '67)  
Mrs. Joan Eagleson  
Mr. & Mrs. Kevin Eagleson  
Dr. & Mrs. Bradley Ehikian (Pamela  
Krikorian Ehikian SJSH '70, SHP '74)  
Mr. Gus Elmashni  
Mr. & Ms. Ronald Espeseth Jr.  
Estate of Mary Evelyn Fox  
Dr. & Mrs. John Etchemendy  
Mr. & Mrs. Jerry Evans  
Mr. & Mrs. Philip Evans  
Mr. James Everitt  
Mr. & Mrs. Patrick Fallon  
Mr. & Ms. Thomas Fallon  
Mr. & Mrs. Joseph Feeney  
Mr. & Mrs. Peter Filice  
Mr. Peter Florkiewicz  
Dr. Kenneth Fong  
Dr. Pamela Fong  
Dr. & Mrs. Clancy France  
Mr. & Dr. Robert Fraser  
Mr. & Mrs. Albert Frazier  
Mr. Leonsio Fuentes  
Mr. & Ms. Ernest Galaviz  
Dr. & Mrs. Juan Garona  
General Mills Box Tops For Education  
Mrs. Ann Fay Barry (SHP '62)  
Mr. & Mrs. Robert Glockner

Ms. Maria Gonzalez  
Mr. Scott Gooch & Ms. Sterrin Bird  
Mr. & Mrs. Peter Gotcher  
The Greene Family  
Mr. & Mrs. Dan Greenleaf  
Ms. Kelli Griffis  
Mr. Keith Halcovich  
Mr. Tim Haley & Dr. Ethna McGourty  
Mr. & Mrs. Fredric Harman  
Mr. & Mrs. Kevin Harvey  
Mr. & Mrs. Frederick Hatton  
Mrs. Renee Hellman  
Mr. Javier Hernandez  
Mrs. Agatha Hoff (SHE '50, SHP '54)  
Mr. & Mrs. Kermit Holderman  
Mr. & Mrs. John Holloway (Anne Marie  
Crowley Holloway SH Newton '73)  
Mrs. Kristina Homer  
Mr. & Mrs. Ben Horowitz  
Mr. Robert Horsley &  
Ms. Laura Hamilton  
Mr. & Mrs. Timothy Howes  
Mr. & Mrs. G. Thompson Hutton  
Mr. & Mrs. Bill Hvidt  
Ms. Barbara Intersimone  
Mrs. Toni Jacobs (SH Forest Ridge '76)  
Mr. & Mrs. Kurt Jagers  
Mr. & Mrs. Justin James  
Ms. Alex Jamieson (SHP '00)  
Mr. & Mrs. John Jarve  
Ms. Sandra Jenkins  
Mr. & Mrs. Ron Johnson  
Ms. Libby Jones  
Ms. Rebecca Jones  
Mr. & Mrs. Kyle Kalmbach  
Ms. Mary Nadine Kane  
Mr. Christopher Kanelopoulos  
Mrs. Kristen Kelly  
Mr. John Kerrigan &  
Mrs. Elizabeth Kerrigan (Elizabeth  
Hunter Kerrigan SJSJ '78, SHP '82)  
Ms. Stephanie Kinser  
Mr. & Mrs. Bradford Koenig  
(Lauren Gray Koenig SJSJ '73, SHP '77)  
Dr. Marek Konopnicki &  
Ms. Barbara Pawlowski-Konopnicki

Mr. Alan Kornfield &  
Mrs. Genette Yogi Kornfield  
Dr. & Mrs. Joseph Krauss  
Mr. & Mrs. R. Scott La Rue  
Mr. & Mrs. Eric Lamb  
Mr. Bryan Lamkin & Dr. Arianna Carughi  
Mr. & Mrs. Raymond Lane  
Ms. Ana Maria Lasala  
Mr. & Mrs. Rob Leadbeater  
Mr. Guy Letteer  
Ms. Jennifer Lettieri  
Mr. & Mrs. Jay Leupp  
Mr. & Mrs. Ronald Lim  
Mrs. Molly Molloy Linneman (SHP '59)  
Mr. Doug Lowney (SJSJ '84, SHP '88) &  
Ms. Valerie Piazzalunga  
Mr. & Mrs. James Lussier  
Mr. Emmanuel Maceda &  
Ms. Maria Lourdes Rufino-Maceda  
Mr. & Mrs. James MacGregor  
Dr. & Ms. Ken MacWilliams  
Marie C. De Dampierre Foundation  
Marie Kendrick Otto Foundation  
Mr. Carlos Marrón &  
Ms. Dora Arredondo-Marrón  
Ms. Lisa Maxson  
Mr. & Mrs. Kevin McCarthy  
Mr. Karl McCrary  
Mr. Raymond McDade &  
Mrs. Diemchi Nguyen  
Mr. & Mrs. Joseph McDonald (Susan  
Lochtefeld McDonald SHP '78)  
Mr. & Mrs. Bill McKenna  
Mr. & Mrs. James McLean  
Mr. & Mrs. James Meakin  
Mr. & Mrs. H. Stephen Meisel  
Dr. Roger Melen & Ms. Arlene Camm  
Mr. & Mrs. Rafael Melgoza  
Mr. & Ms. Christian Mellberg  
Mr. & Mrs. Andres Mera (Maggie San  
Martin Mera SH Manhattanville)  
Ms. Tenley Mochizuki (SHP '05)  
Mr. & Mrs. Mike Mohrman  
Mr. & Mrs. Gary Moiseff  
Mr. Jake Moffat & Dr. Elizabeth DuBose  
Mr. John Moragne & Ms. Kimberly Young

Mr. & Mrs. Matt Moran  
Mrs. Teresa Moreno  
Mr. & Mrs. Michael Murphy  
Mr. & Ms. Sami Nawas  
Mr. & Mrs. Christopher Nawn  
Mr. Justin Nixon  
Mr. Kenneth Olivier &  
Mrs. Angela Nomellini  
Mr. & Mrs. Peter Oppenheimer  
Dr. Amado Padilla &  
Ms. Deborah Farrington Padilla  
Ms. Stephanie Parks  
Mr. & Mrs. Joseph Parsons  
Mr. Scott Paterson  
Ms. Louise Paustenbach  
Mr. Kenneth Pelowski & Ms. Lori Mirek  
Mr. Anthony Peterson &  
Ms. Isolina Martinez  
Mr. Keith Peterson  
Mr. & Ms. Jason Pfannenstiel (Charlotte  
McIntosh Pfannenstiel SJSJ '93,  
SHP '97)  
Mr. & Mrs. Mark Pitchford  
(Laura Daschbach Pitchford SJSJ '73,  
SHP '77)  
Mr. & Mrs. Marvin Pjesky  
Ms. Kelly Power  
Mr. & Mrs. Lamont Quattlebaum  
(Wendy Miller Quattlebaum SHP '93)  
Mr. & Mrs. Colin Quinton  
Ms. Susan Raffo  
Mr. & Mrs. Michael Ramey  
Ms. Lucinda Ramirez  
Mr. Jesus Ramos  
Mr. Jeff Reed & Dr. Janine Reed  
Mr. & Mrs. Timothy Reeves  
Mr. & Mrs. Jeff Reynolds  
Mr. Patrick Roberts  
Mr. & Mrs. Mark Robson  
Mr. Marin Rodriguez  
Mrs. Maryanne Roger (Lone Mountain)  
Mr. & Mrs. Jesse Rogers  
Mr. & Mrs. Frank Romeo  
Mr. & Mrs. Daniel Rosensweig  
Sister Martha Roughan  
Mr. & Mrs. Stephen Rudolph  
Mr. & Mrs. Rick Runkel

Sister Mary Pat Ryan  
Mr. & Mrs. Scott Ryles  
Sacred Heart Prep Parents Association  
Mr. & Mrs. Vince Sakowski  
Mr. & Mrs. Paul Sallaberry  
Mr. Alan Salzman &  
Mrs. Jillian Manus-Salzman  
Ms. Carol Schaffer  
Mr. & Mrs. John Schreiber  
Mr. Christopher Scott  
Mr. & Ms. Thomas Seaney  
Mr. & Mrs. Walter Sedgwick  
Mr. & Mrs. Matt Shane  
(Kelli Miller Shane SHP '98)  
Mr. & Mrs. James Shannon  
Mr. & Mrs. Michael Siddens  
Mr. Jason Simpson & Ms. Rachel Prouty  
Mr. William Skaff  
Ms. Jessica Sperle  
Mr. & Mrs. Thomas Spieker  
Mr. & Mrs. Arthur Squillante  
Ms. Bridget Stefanski (SHP '01)  
Mr. & Mrs. Stephen Steppe  
Mr. Tobi Stuart &  
Mrs. Sarah Buckley-Stuart  
(SJSJH '83, SHP '87)  
Mr. & Mrs. Kenneth Sutherland  
Ms. Myra Syed  
Mr. Sergio Tapia & Mrs. Maria Tapia  
Mr. & Mrs. Paul Tarantino  
Mr. & Mrs. Michael Taverna  
Mr. & Mrs. Philip Taylor  
Mrs. Lynne Thomas (SHP '60)  
Mr. & Ms. John Thompson  
Tiffany & Co.  
Mr. & Mrs. David Traub  
Mr. Barry Treseler & Ms. Claire Dean  
Ms. Alison Trujillo  
Mr. & Mrs. Carlos Turchetti  
Mr. & Mrs. Simon Turner  
Ms. Hui-Yuan Ueberschaer  
Mr. & Mrs. Clifford Vaida  
Ms. Dana Van Wyk  
Mr. & Mrs. Louis Vanoli  
Mr. & Mrs. Peter Varga

Mr. Jason Varga (SJSJH '91, SHP '95) &  
Ms. Audrey Harper  
Mr. & Mrs. Douglas VauDell  
Mr. Luis Vazquez  
Ms. Genevieve Vulser  
Mr. & Mrs. Derek Waarich  
Mr. J. Peter Walker &  
Ms. Megan Harbison  
Ms. Lauren Whittam  
Mr. & Mrs. Thomas Wiggans  
Mr. & Mrs. George Wildey  
(Janet Dyer Wildey SJSJH '65, SHP '69)  
Mr. Thomas Wildman  
Mr. & Mrs. Alvin Wilkins  
Ms. Serene Williams  
Mr. & Mrs. Michael Wishart Sr.  
Mr. & Mrs. Raymond Woo  
Ms. Vanessa Woods  
Mr. Geoffrey Yang  
Ms. Lynne Young  
Mr. Joseph Zucca & Mrs. Ruth Victorino

**THE ANNUAL FUND** is an ongoing campaign that helps Sacred Heart Schools bridge the approximately 7 percent gap between the cost of tuition and the actual cost of educating each student. Money raised for the Annual Fund goes directly into supporting the current operating budget and enables Sacred Heart Schools to:

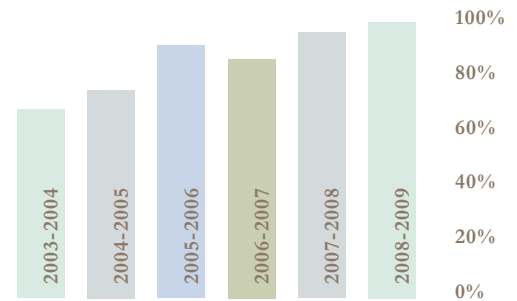
- Offer competitive salaries and benefits to attract and retain top-tier faculty and staff
- Provide tuition assistance for deserving students and their families
- Offer students grades six through twelve with four foreign language opportunities
- Prevent tuition from rising at a greater rate
- Upgrade classroom technology
- Provide academic field trips
- Improve and maintain our historic 64-acre campus

## Annual Fund

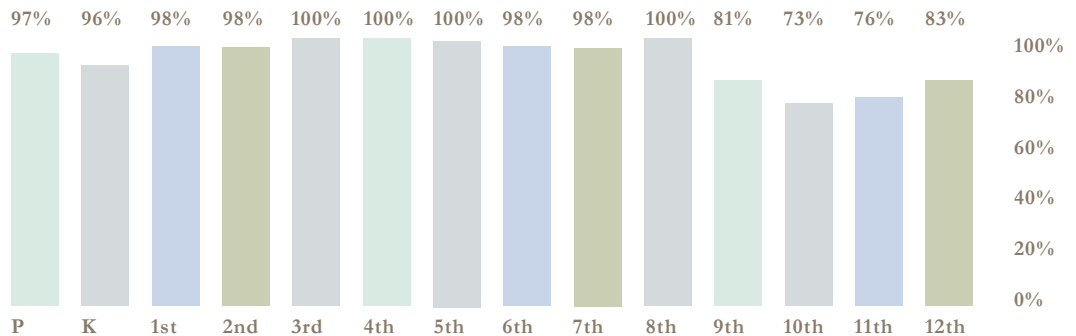


### ANNUAL FUND PARENT PARTICIPATION

2003-2004	64%
2004-2005	74%
2005-2006	86%
2006-2007	83%
2007-2008	87%
2008-2009	88%



### ANNUAL FUND PARENT PARTICIPATION BY GRADE



### OVERALL SHS PARENT PARTICIPATION 88%

---

## ANNUAL FUND DONORS BY GIVING SOCIETY

### Bell Tower Society - (\$50,000 and above )

Mrs. Roberta Campbell  
Mr. William Campbell  
Mr. & Mrs. Michael Child  
Mr. & Mrs. Timothy Draper  
Mr. & Mrs. Bruce Dunlevie  
Mr. & Mrs. James Greene Jr.  
Mr. Tim Haley & Dr. Ethna McGourty  
Mr. & Mrs. Fredric Harman  
Mr. & Mrs. Jesse Rogers  
Mr. & Mrs. John Walecka

### Très Bien Society - (\$25,000 - \$49,999 )

Mr. Jeffrey Chambers &  
Mrs. Andrea Okamura  
Mr. & Mrs. David Dollinger  
Mrs. Ann Fay Barry (SHP '62)  
Mr. & Mrs. Peter Gotcher  
Mrs. Kristina Homer  
Mr. & Mrs. Nick Jimenez (SJSJH '91)  
Mr. Kenneth Olivier &  
Ms. Angela Nomellini  
Mr. & Mrs. Peter Oppenheimer  
Mr. & Mrs. David Roux  
Mr. Val Vaden & Ms. Lilli Rey

### Sacré Coeur Society - (\$10,000 - \$24,999 )

Mr. & Mrs. Harvey Armstrong  
Mr. & Mrs. David Burke  
The Callinan Family  
Mr. & Mrs. Edward Cluss Jr.  
Mr. & Mrs. Herschel Cobb (Madelyn  
"Lyn" Jason Cobb SHE '65, SHP '69)  
Mr. & Ms. Brendan Cullen  
Mr. & Mrs. John Donahoe Sr.  
Mr. & Ms. Ronald Espeseth Jr.  
Mr. & Ms. Thomas Fallon  
Frank A. Campini Foundation  
Mrs. Madelyn Gilmore Jason  
Goldman Sachs & Co.  
Matching Gift Program  
Mr. & Mrs. Frederick Goltz

Mr. & Mrs. Kevin Harvey  
Mr. Robert Hellman Jr.  
Mr. James Heslin & Mrs. Rose Hau  
Mr. & Mrs. Rick Hill  
Mr. & Mrs. John Holloway (Ann Marie  
Crowley Holloway SH Newton '73)  
Mr. & Mrs. G. Thompson Hutton  
Mr. & Mrs. John Jarve  
Mr. & Mrs. Ron Johnson  
Mr. & Mrs. David Keil (SJSJH '55)  
Mr. & Mrs. Bradford Koenig  
(Lauren Gray Koenig SJSJH '73, SHP '77)  
Mr. Randy Lamb &  
Mrs. Lisa Carey-Lamb  
Mr. Tom McConnell & Ms. Trish Turner  
Mr. & Mrs. James McLean  
Mr. & Mrs. David Mitchell Ph.D.  
Mr. & Mrs. Christopher Nawn  
Mr. & Mrs. Nersi Nazari  
Mr. Zodi Nazem &  
Mrs. Noosheen Hashemi  
Mr. Thomas Neff & Mrs. Donna Neff  
Mr. & Mrs. Mark Robson  
Mr. William Romans &  
Ms. Susan Barsamian  
Mr. & Mrs. Daniel Rosensweig  
Mr. & Mrs. Paul Sallaberry  
Mr. & Ms. Thomas Seaney  
Dr. & Mrs. David Shen  
Mr. David Strohm & Mrs. Kathy Reavis  
Mr. Ron Sturzenegger &  
Ms. Lisa Sturzenegger  
Mr. & Mrs. Richard Thompson  
Mr. & Mrs. Michael Wishart Sr.

### Barat Society - (\$5,000 - \$9,999 )

Mr. & Mrs. Sohaib Abbasi  
Mr. & Mrs. Stephen Ackley  
Mr. & Mrs. Steven Baloff  
Mr. & Mrs. Thomas Barnds Sr.  
Mr. & Mrs. Douglas Bergeron  
Mr. & Mrs. Steven Bird

Ms. Suzanne Bryan  
Mr. & Mrs. Charlton Buckley  
Mr. & Mrs. Robert Chaplinsky  
Mr. & Mrs. Harry Chou  
Mr. & Dr. Timothy Colby  
(Antje Zapf Colby SJSJH '81)  
Mr. & Mrs. Howard Daschbach, Jr.  
(Leonore Rooney Daschbach SHE '42,  
SHP '46)  
Mr. Dennis DeBroeck &  
Ms. Nancy Heinen  
Mr. & Mrs. John Denniston  
Mr. & Mrs. Jerry Evans  
Mr. & Mrs. Patrick Fallon  
Ms. Kimmie Fitzpatrick (SHP '02)  
Mr. & Mrs. Michael Fitzpatrick  
Mr. & Mrs. William Frimel (Susan  
O'Brien Frimel SJSJH '83, SHP '87)  
Google Matching Gifts Program  
Ms. Heather Harding  
Mr. & Mrs. William Harding  
Mrs. Karen Heaney Hook  
Mrs. Barbara Hinman  
Mr. William Hinman Jr.  
Mr. Duane Hook  
Dr. Hoyoung Huh & Mrs. Eleanor Park  
Mr. & Mrs. John Hunter  
Mr. & Mrs. Kurt Jagers  
Mr. John Kerrigan &  
Mrs. Elizabeth Hunter Kerrigan  
(SJSJH '78, SHP '82)  
Mr. Ross Koningstein &  
Ms. Patti Spezzaferro  
Mr. & Mrs. Eric Lamb  
Mr. & Mrs. James Larson  
Mr. Manny Maceda &  
Ms. Maria Lourdes Rufino-Maceda  
Mr. & Mrs. Robert McNamara  
Microsoft Corporation  
Mr. & Mrs. Mike Mohrman  
Mr. & Mrs. Charles Moldow  
Mr. & Mrs. David Mooring

Mr. John Moragne & Ms. Kimberly Young  
Ms. Ann McGraw Morrical  
(SJSJH '77, SHP '81)  
Mr. Scott Morrison & Ms. Jennifer Minton  
Mr. & Mrs. Greg Munks  
Mr. & Mrs. Bryan Neider  
Novellus Systems Incorporated  
Mr. Richard Oppenheimer  
Mr. & Ms. Gary Palmer  
Mr. & Mrs. Mark Pitchford  
(Laura Daschbach Pitchford SJSJH '73,  
SHP '77)  
Mr. & Mrs. David Polkinhorne  
Mr. & Mrs. Martin Putnam  
Mr. & Mrs. Sudhakar Ravi  
Mr. & Mrs. Peter Rosekrans  
Mr. & Mrs. Rick Runkel  
Mr. & Mrs. Paul Rydberg  
Mr. & Mrs. Stephen Schwerdfeger  
Mr. & Mrs. Alan Sclafani  
Mr. & Mrs. James Shannon Jr.  
Mr. & Mrs. Kenneth Sims  
Mr. & Mrs. Stephen Smith  
Mr. Tobi Stuart & Mrs. Sarah Buckley  
Stuart (SJSJH '83, SHP '87)  
Mr. & Mrs. Kenneth Sutherland  
Mr. & Mrs. Kevin Taweel  
Mr. & Mrs. Lim Hock Tay  
Mr. & Mrs. Ken Tinsley  
(Susan Walsh Tinsley SJSJH '79)  
Mr. Thanos Triant & Mrs. Ingrid Marlow  
Mr. & Mrs. Andre Touma  
Mr. James Tung & Ms. Elaine Tse  
Mr. Joseph Vetter  
Ms. Sara Vetter  
Mr. Peter Watkins & Ms. Karen Moore  
Mr. & Mrs. James White  
Mr. & Mrs. Kevin Zerber

**Duchesne Society - (\$2,500 - \$4,999)**

Anonymous (2)  
The Aitken-Young Family  
Mr. & Mrs. Laurence Akin  
Mr. & Mrs. James Alexander  
Amgen Foundation  
Mr. & Mrs. Mike Armistead

Mr. & Mrs. David Armstrong  
Mr. & Mrs. Brian Avery  
Mr. & Mrs. Phillip Bachler  
Mr. & Mrs. Jon Ballack  
Barclays Global Investors Matching Gift  
Center  
Dr. Kurt Bausback & Dr. Mary Kiely  
Mr. & Mrs. Gary Beckman  
Dr. & Dr. Jeff Bird  
Mr. & Mrs. John Borchers  
Mr. & Mrs. Steve Bruni  
Mr. Alexander Buccieri  
The Catholic Foundation  
Mr. & Mrs. Robert Ceremsak Jr.  
Mr. & Mrs. Peter Clark  
Mr. & Mrs. Peter Coleman (SHP '88)  
Mr. & Mrs. Grant Culpán  
Mr. & Mrs. Ron Currier  
Dr. & Mrs. Dirk Diefendorf  
Mr. & Mrs. Jeffrey Drazan  
Mr. Mark Duchesne &  
Ms. Cynthia Hamilton  
Electronic Arts OutrEAch  
Mr. & Mrs. Raymond Farnham  
Mr. & Mrs. Mark Flessel  
Mr. & Mrs. Mark Flynn  
Mr. & Mrs. Albert Frazier  
Mr. & Mrs. Robert Freitas  
Mr. & Mrs. Matthew Frome  
Mr. & Mrs. Stephen Gaddis  
(Susan Giavia Gaddis SHP '68)  
Mr. & Mrs. Christopher Gaertner  
Mrs. Kristina Gavello  
Mr. & Mrs. Frank Gibeau  
Mr. & Mrs. Robert Glockner  
Mr. & Mrs. Rex Golding  
Dr. & Dr. Jeffrey Guardino  
Mr. Jim Russell &  
Mrs. Jane Haake-Russell  
Mr. & Mrs. John Hansen  
Mrs. Renee Hellman  
Mr. & Mrs. Manuel Henriquez  
Mr. & Mrs. David Henry  
Mr. & Mrs. Brad Henske  
Mr. & Mrs. James Hinson  
(Mary Pang Hinson SJSJH '72, SHP '76)

Mr. Andy Hirsch & Ms. Nina Brooks  
Mr. & Mrs. Glen Howard  
Mr. Karl Hutter &  
Mrs. Shelley Kellner-Hutter  
Intel Matching Gifts to Education  
Mr. Joel Jewitt & Ms. Chris Surowiec  
Mr. & Mrs. Guy Kawasaki  
Mr. & Mrs. Kenneth Klein  
Mr. Vafa Kordestani &  
Mrs. Neda Kordestani  
Mr. & Mrs. R. Scott La Rue  
Mr. Bryan Lamkin & Dr. Arianna Carughi  
Louise M. Davies Foundation  
Mr. Douglas Maduro &  
Dr. Mary Ann Sarda-Maduro  
Mr. & Mrs. Mike Maples  
Mr. & Mrs. Mark Martella  
Mr. & Mrs. Thomas McCracken  
Dr. Roger Melen & Ms. Arlene Camm  
Merck Company Foundation  
Mr. & Mrs. Michael Moe  
Mr. & Mrs. Jeffrey Morris  
Mr. & Ms. Robert Nibbi  
Mr. Kenneth Pelowski & Ms. Lori Mirek  
Mr. & Ms. Hans Plesman  
Mr. Vincent Pluinage &  
Mrs. Margaret Farrell  
Mr. & Mrs. Matthew Powers  
Mr. & Mrs. Sreekanth Ravi  
Mr. Jeff Reed & Dr. Janine Reed  
Dr. Glenn Rennels &  
Dr. Margaret Forsyth  
Mr. & Mrs. William Rieflin  
Mr. & Mrs. Bow Rodgers  
Mr. Garrett Roper & Ms. Afsaneh Akhtari  
Mr. & Mrs. Carl Rosendahl  
Mr. & Mrs. Mark Rowland  
Mr. & Mrs. Stephen Rudolph  
Dr. Eric Rulifson & Dr. Salli Tazuke  
Mr. & Mrs. Mansour Salamé  
Mr. Alan Salzman &  
Mrs. Jillian Manus-Salzman  
Mr. Raj Sandhu & Mrs. Mary Henry  
Mr. & Mrs. John Schreiber  
Mr. Douglas Schulz &  
Mrs. Frances Schulz

Mr. & Dr. Stephen Seabolt  
Mr. & Mrs. Walter Sedgwick  
Mr. & Mrs. Bradley Smith  
Mr. & Mrs. Stephen Steppe  
Mr. & Mrs. Mark Stevens  
Mr. & Mrs. Robert Swan  
Mr. & Mrs. Michael Texido (SJSJH '80)  
Mr. & Mrs. Thierry Thaire  
Mr. & Mrs. Andrew Thompson  
Mr. & Mrs. Kevin Thompson  
UBS Matching Gift Program  
Mr. & Mrs. Guy Wanger  
Washington Mutual Matching Gift  
Program  
Dr. Harry Whitehouse &  
Dr. Wendy Rabinov  
Mr. & Mrs. Alvin Wilkins  
Mr. & Mrs. Joseph Yaffe  
Mr. & Mrs. David Young  
Mr. Pierluigi Zappacosta &  
Mrs. Enrica D'Ettorre

**Stuart Society - (\$1,000 - \$2,499 )**  
Dr. & Mrs. Ken Abe  
Mr. & Mrs. Gary Ahern (Connie Blaine  
Ahern SJSJH '77, SHP '81)  
Mr. Daniel Alvarez &  
Mrs. Vickie Frydenlund  
Mr. & Mrs. Saeed Amid-Hozour (Samira  
Vakhshour Amid-Hozour SHP '89)  
Anonymous (3)  
Dr. & Mrs. Nicholas Athens  
Mrs. Marion Avery  
Mr. John Baer & Mrs. Helen Beitz  
Mr. G. Leonard Baker Jr. &  
Mrs. Mary Anne Nyburg Baker  
Mr. & Mrs. Scott Barnum  
Mr. Jeffrey Baruh  
Mr. & Mrs. Brian Beattie  
Mr. Steven Bell  
Mr. & Mrs. Mark Bigley  
Mr. & Mrs. Scott Bohannon  
(Mary Miller Bohannon SHP '77)  
Mr. & Mrs. Stephen Boyden  
Mr. & Mrs. Patrick Brandin  
Mr. & Mrs. Philip Brezinski (Maude  
Nolan Brezinski SH Noroton '72)

Mr. & Mrs. Dan Brosnan  
Ms. Diane Brugos  
Mr. & Mrs. John Bryan (Florence "Flo"  
Eyre Bryan SHE '38, SHP '42)  
Mr. & Mrs. Gerhard Burbach  
Mr. & Mrs. Douglas Calderon  
Mr. & Mrs. Mark Carlson  
Mr. Terry Carlson & Mrs. Danielle  
Gaubert-Carlson (SJSJH '78)  
Mr. & Mrs. Mike Cashin  
Mr. & Mrs. Gregory Cattermole  
(SJSJH '70)  
Mr. & Mrs. Chi-Chao Chang  
Mr. Duk Cho & Mrs. Kyoung Cho  
Dr. & Mrs. Thomas Chou  
Mr. & Mrs. George Chrisman III  
Mr. Nick Chrisman (SHP '06)  
Mr. & Mrs. Carlos Collazo  
Mr. & Mrs. Robert Comartin  
Mr. & Mrs. James Conn  
(Joelle Walsh Conn SHP '57)  
Mr. & Mrs. Steven Cook  
Mr. & Mrs. Rick Corcoran  
Mr. & Mrs. Andre de Baubigny  
Mr. & Mrs. Charles Dearborn  
Mr. & Mrs. John Del Santo Sr.  
Mr. & Mrs. Paul DiNardo  
Mr. & Mrs. Richard A. Dioli  
Mr. Jon Duane &  
Mrs. Cathy Friedman Duane  
Mr. & Mrs. Mike Dubinsky  
Mr. & Mrs. Martin Dunsby  
Mr. & Mrs. Louis Ebner  
Mr. & Mrs. William Elmore  
Dr. & Mrs. John Etchemendy  
Mr. & Ms. Royal Farros  
Mr. & Mrs. Nicholas Farwell  
Mr. & Mrs. Joseph Feeney  
Mr. Patrick Fellowes & Ms. Sherrie Chow  
Dr. Kenneth Fong  
Dr. Pamela Fong  
Mr. & Mrs. Thomas Friel  
Mr. Murphy Gallagher (SJSJH '98)  
Mr. & Mrs. Patrick Gallagher  
Mr. & Mrs. William Galliani  
Dr. Manuel Garcia &  
Dr. Maritza Gonzalez

Mr. & Mrs. George Garrick  
Mr. & Mrs. Patrick Geary  
Ms. Carolyn Gino  
Mr. & Mrs. Nick Granoski  
Mr. & Mrs. Gary Graumann  
Mr. & Mrs. David Hannebrink  
Dr. & Mrs. Gary Hartman  
Dr. Thomas Henderson  
Mr. & Mrs. Kelly Herrell  
Mr. & Mrs. Jeffrey Hewitt (Diana  
Beltramo Hewitt SJSJH '83, SHP '87)  
Mr. & Mrs. Matthew Hogan  
Mr. & Mrs. Chin Hong  
Mr. & Mrs. John Hopkins  
(Maria Elena Magana Hopkins SHP '52)  
Mr. Albert Horn  
Mr. & Mrs. William Hsieh  
IMS Matching Gift Program for  
Education  
Ms. Marie Jackson  
Mr. Rick Jackson  
Ms. Sally Johnson  
Mr. & Mrs. Arnold Jones III  
Mr. & Ms. Randy Keller  
Kepler's Books and Magazines  
Mr. & Ms. Yuki Kitano  
Mr. Michael Krautkramer &  
Ms. Dorian Daley  
Mr. & Mrs. Fred Kriebel  
Mr. & Mrs. Gordon Kruberg  
Ms. Terri Kwan  
Mr. & Mrs. Raymond Lane  
Mr. & Mrs. Scott Lessing  
Mr. & Mrs. Jay Leupp  
Mr. & Mrs. David Levison  
Mr. & Mrs. Bradford Lewis  
Mr. & Mrs. Michele Libraro  
Mr. & Mrs. Michael Liebsch Sr.  
Mr. & Mrs. Daniel Lockwood  
Dr. & Dr. Michael Longaker  
Ms. Kelly Lorson  
Mr. & Mrs. Donald Lucas (SJSJH '76)  
Mr. & Mrs. Kevin Lynch  
(Laural Gifford Lynch SHP '78)  
Mr. & Mrs. James MacGregor  
Dr. & Ms. Ken MacWilliams  
Mr. Roy Magruder & Dr. Judith Nevitt

Mr. & Mrs. John Malcolm  
Mr. & Mrs. Lorenzo Martinelli  
Dr. Duncan Mason &  
Ms. Deirdre McHugh (SHP '66)  
Mrs. Kathy Cunningham Matthews  
(SHP '71)  
Dr. & Mrs. David Mauney  
Dr. Bruce McAuley & Dr. Susan Kritzik  
Dr. & Mrs. Daniel McFarland  
Mr. Daniel McGanney III (SJSJH '65)  
Mr. John McGraw (SJSJH '76)  
Mr. & Mrs. Dorian McKelvy  
(Teri Gray McKelvy SJSJH '72, SHP '76)  
Mr. & Mrs. Bill McKenna  
Mr. & Mrs. H. Stephen Meisel  
Mr. & Mrs. Brett Miller  
Mr. & Mrs. Daniel Miller  
Ms. Amity Millhiser  
Dr. & Mrs. Gabriel Miranda  
Mr. & Mrs. William Morgan  
Morgan Stanley Matching Gift  
Dr. & Mrs. Greg Morganroth  
Dr. Marty Morrell  
Mr. & Mrs. Richard Morris  
Mr. & Mrs. Robert Mustarde  
Mr. Clinton Newby &  
Mrs. Mary O'Flanagan  
Mr. Hoang Nguyen &  
Mrs. Bichhuyen Pham  
Ms. Inessa Obenhuber  
Mr. & Mrs. Joseph Oeschger  
Mr. & Mrs. Hiro Ogawa  
Dr. & Mrs. John O'Holleran  
Mr. & Ms. Christopher Oswald (Legia  
Rillos Oswald SJSJH '78, SHP '82)  
Mr. & Mrs. Douglas Pica  
Mr. Kenneth Preminger &  
Mrs. Jocelyn Kung  
Mr. Gary Price & Mrs. Bella Leung  
Mr. Dan Puckett  
Mr. Ronald Ratcliffe & Mrs. Kathleen Mei  
Dr. & Ms. Ilhan Refioglu  
Mr. & Mrs. Brendan Reidy  
Mr. & Mrs. Duke Rohlen  
Mr. & Mrs. Scott Ryles  
Sacred Heart Prep Parents Association

Mr. & Mrs. Vince Sakowski  
SAP Matching Gift Program  
Dr. & Mrs. Mark Sarkisian  
Mr. & Mrs. Andreas Schlotter  
Mr. & Mrs. Douglas Schrier  
Mr. & Mrs. Robert Schwartz  
Mr. & Mrs. Matthew Serrano  
Mr. & Mrs. Bruce Sewell  
Mr. & Mrs. Stephen Sexton  
Mr. & Mrs. Munetaka Shiratori  
Mr. Raymond Smith &  
Ms. Ofelia Delgadillo  
Mr. & Mrs. Warren Spieker Jr. (SJSJH '58)  
Mr. & Mrs. William Stewart  
Mr. & Mrs. Thomas Still  
Dr. & Ms. John Stoner III  
Sun Microsystems Matching Gifts  
Program  
Mr. John Suttle  
Mr. & Mrs. Gary Swart  
Mr. & Mrs. Brandon Sweeney  
Mr. & Mrs. Victor Szczerba  
Mr. & Mrs. Art Taylor  
Mrs. Helen Texido  
Mr. Carter Thacher  
Mr. & Mrs. John Thielens  
Mr. & Mrs. Robert Thomas  
Mr. & Mrs. Thomas Villeneuve  
Mr. & Mrs. Gregg von Thaden  
Mr. & Mrs. Craig Vought  
Mr. & Mrs. David Weiden  
Mr. & Mrs. David Welch  
Wells Fargo Foundation Educational  
Matching Gift Program  
Mr. & Mrs. Scott Wickstrom  
Mr. & Mrs. David Wilkinson  
Mr. Hon Wong & Ms. Zhi Yi  
Yahoo Matching Gifts  
Mr. & Mrs. Alan Young  
Mr. Mamali Zarringhalam &  
Mrs. Marjaneh Ravai  
Mr. Clark Zhu & Mrs. Claire Gu  
  
**Fox Society - (\$500 - \$999)**  
Mr. Eli Abbe & Ms. Jessica Arner  
Mrs. Gay Batistich Abuel-Saud (SHP '75)

Mr. & Mrs. Hossein Alaei  
Ms. Margarita Alvarez-Neuman (SHP '93)  
Anonymous (3)  
Mr. & Mrs. Curtis Archibald  
Mr. & Mrs. Peter Bailey  
Mrs. Julie Bell  
Mr. & Mrs. John Bellack  
Mr. & Ms. Norman Blears  
Dr. & Mrs. Gregory Buncke M.D.  
Mr. & Mrs. Robert Caine  
Mrs. Ann Carey (SJSJH '71, SHP '75)  
Mr. & Mrs. David Carroll  
Mr. & Mrs. Bernard Cassidy Sr.  
Mr. & Mrs. Bayardo Chamorro  
Mr. & Mrs. Ray Chau  
Dr. & Mrs. Kirk Churukian  
Mr. & Mrs. Thomas Colby  
Mr. & Mrs. Richard Collins  
Mr. & Mrs. Victor Colunga  
Mr. & Mrs. Eric Copeland  
Mr. & Mrs. Peter Cowperthwaite  
Mr. & Mrs. David Cropper  
Mr. & Mrs. Mark Daschbach  
Mrs. Robyn Denholm  
Mr. Greg Dertorossian &  
Mrs. Ashley Waters  
Mr. & Mrs. Robert Doody  
Mr. & Mrs. John Ertola (Alexandra Lucas  
Ertola SJSJH '72, SHP '76)  
Ms. Conchita Espino de Marin (SHP '68)  
Mr. & Dr. Richard Ferranti  
Mr. & Mrs. Dominic Ferrari  
Mr. & Mrs. John Foster  
Dr. & Ms. Michael Fowler  
Mr. Lance Freeman & Mrs. Melissa  
Calcaterra Freeman (SJSJH '78, SHP '82)  
Mr. & Mrs. Kevin Gillett (Erin Rosenberg  
Gillett SHP '90)  
Mr. & Mrs. Paul Hammack  
Mr. & Mrs. Grant Hendrick  
Mr. & Mrs. R. Andrew Holtvedt (Eileen  
Steller Holtvedt SH Greenwich '74)  
Mr. & Mrs. Hilleary Hoskinson  
Mr. & Mrs. Daniel Hruska  
Mr. Sean Huss &  
Mrs. Kathy Surprise-Huss  
Mr. Vinh Huynh & Mrs. Gabrielle Le

Jane Antonacci Interior Design  
Mr. & Mrs. Stephen Joy  
Mr. Shahin Khan  
Mr. Jeff Kinder & Ms. Julie Herlihy  
Mr. & Mrs. Jan King  
Mr. & Ms. Bradley Knox  
Mr. & Mrs. Robert Koenig  
Mr. & Mrs. William Kohrs  
Mr. Robert Komin & Mrs. Charlene Hays  
Dr. Marek Konopnicki &  
Ms. Barbara Pawlowski-Konopnicki  
Dr. & Mrs. Joseph Krauss  
Mr. & Mrs. Mark Kremer  
Mr. & Mrs. Gregory Krikorian (SJSJH '73)  
Mr. & Mrs. Rob Leadbeater  
Ms. Sara Leith-Tanous  
Mr. James Levison  
Mr. & Mrs. Charles Lochtefeld  
Mr. Doug Lowney (SJSJH '84, SHP '88) &  
Ms. Valerie Piazzalunga  
Mrs. Danette Magilligan  
Mr. & Mrs. Steve McCarthy  
Mr. & Mrs. Thomas McMahon Jr.  
Ms. Beverly Merrill  
Mr. & Mrs. Stephen Milligan (Anne  
O'Connell Milligan SHP '84)  
Dr. & Mrs. Dev Mishra  
Ms. Sarah Morrone  
Mr. & Mrs. Christophe Moustirats  
(SHP '90) (Cristina Echevarria  
Moustirats SHP '90)  
Munger, Tolles, & Olson LLP  
Mr. & Mrs. Daniel Myers  
Mr. & Mrs. Thomas Myers  
Mr. & Mrs. Scott Nakamura  
Mr. & Mrs. Ralph Navarro Jr.  
Mr. & Ms. Sami Nawas  
Mr. & Mrs. William Neidig II  
Mr. & Mrs. James Noonan  
Dr. & Mrs. Jeffrey Norton  
Mr. & Mrs. James Nute  
(Peggy Fitzgerald Nute SHE '51)  
Mr. & Mrs. Perry Palmer  
Ms. Ellen Parsons (Ellen Gallagher  
Parsons SH Newton '74)  
Mr. Jack Parsons

Mrs. Putter Pence (Mary "Putter"  
Anderson Pence SJSJH '73, SHP '77)  
Mr. & Ms. James Pistorino  
Dr. & Mrs. David Pizzuti  
Mr. & Mrs. Robert Plaschke  
Mr. & Mrs. Paul Poletti  
Ms. Sigrid Puckett  
Ms. Susan Raffo  
Mr. & Mrs. Jeffrey Randall  
Mr. & Mrs. Peter Randall  
Mr. & Mrs. Peter Robinson (Edita Maria  
Alicia Robinson SH Stoneridge '79)  
Dr. & Mrs. Bernard Ross  
Mr. & Mrs. Ralph Russo  
Mr. & Mrs. Kevin Scheetz  
Mr. & Mrs. John Scheifly Jr.  
Mr. & Mrs. David Schroeder (Carmen  
Sofia Rojas Schroeder SHP '83)  
Dr. & Mrs. William Sheridan  
Mr. Hwang-Chi Shih & Mrs. Linda Chen  
Mr. Klaus-Dieter Spatz &  
Mrs. Karen Chong  
Mr. & Mrs. Tom Stephenson  
Dr. & Mrs. Bernard Steyer  
Mr. & Mrs. Jose Suarez  
Mr. & Mrs. David Traub  
Mr. & Mrs. Todd Tuomala  
Mr. & Mrs. Peter Vece  
Ms. Stephanie Vinella  
Mr. & Mrs. Craig Walsh  
Wells Fargo Community Support  
Campaign  
Western Asset Management Matching  
Gift Program  
Dr. & Mrs. Richard Wheat  
Ms. Kathryn Wilson  
Ms. Ivy Winters  
Ms. Barbara Wittick (SJSJH '79)  
Mr. Geoffrey Yang  
Mr. Fayyaz Younas &  
Mrs. Summreen Ahmad  
Mr. Mark Zdeblick & Dr. Melanie Smitt

**Porte Cochère Society – (Up to \$499)**  
Mr. & Mrs. Eugenio Abarca  
Mr. Chris Adams

Mrs. Elizabeth Adams (Elizabeth "Betty"  
Robinson Adams SHP '34)  
Mr. & Ms. Ofer Agam  
Ms. Kristen Alexander  
Mrs. Sally Allegaert (Sarah "Sally"  
Sorensen Allegaert SHP '64)  
Mr. & Mrs. Joseph Allegretti (Kelly  
Stokes Allegretti SHP '82)  
Mrs. Janie Allen (Katherine "Janie" Clark  
Allen SJSJH '84, SHP '88)  
Mr. & Mrs. John Allen  
(Mary Cowan Allen SHE '42)  
Mr. & Mrs. Satish Almaula  
Ms. Michelle Andersen (SHP '85)  
Mr. & Mrs. David Anderson  
Mr. & Mrs. Harold Anderson  
Mr. & Mrs. Jim Andrews  
Ms. Genevieve Ang (SHP '04)  
Mr. Randy Ang (SHP '06)  
Mr. Robert Angcay  
Mr. & Mrs. Jesus Angel  
Anonymous (11)  
Mr. & Mrs. Jeffrey Anstrom  
Mr. & Mrs. Bob Antonacci  
Ms. Jane Antonacci  
Mr. & Mrs. David Appel  
Ms. Kendra Armstrong (SHP '03)  
Mr. & Mrs. Jeffrey Arons  
Mr. & Mrs. Mike Ashendorf  
(Anne Lucier Ashendorf SJSJH '81)  
Mr. & Mrs. Mark Askins (Mary Lucier  
Askins SJSJH '79, SHP '83)  
Mrs. Laura Mc Ginnis Austin (SHE '56)  
Mr. & Mrs. Alfonso Avila Sr.  
Mr. & Mrs. Miguel Avila  
Mr. & Mrs. Joel Ayala  
Mr. & Mrs. James Azevedo (Rita Jo  
McManus Azevedo SHP '56)  
Ms. Addie Bacon (SHP '03)  
Ms. Mariette Bacon  
Ms. Karen Bailey  
Drs. Naoum & Houda Baladi  
Mr. Refugio Balderrama  
Mrs. Amy Nusser Baldwin (SHP '81)  
Ms. Sylvia Baldwin  
Mrs. Julie Ball

Mr. Miguel Barajas  
 Brother Pat Barbariol (SJSJH '51)  
 Mr. Ben Barnes &  
 Ms. Nadine Taylor-Barnes  
 Mr. Robert Barnes  
 Mr. & Mrs. Hector Barragan  
 Mr. & Mrs. David Barry  
 (Elaine Berra Barry SHP '87)  
 Mrs. Margaret Weiler Barry (SJSJH '43)  
 Mr. & Mrs. Adam Barycza (SHP '96)  
 Mr. & Dr. Mehran Bashiri  
 Mr. & Mrs. Mark Basnage  
 Mr. & Mrs. Richard Bassin  
 Mr. & Mrs. Larry Bauer  
 (Pauline Wood Bauer SHP '54)  
 Mr. John Bautista  
 Mrs. Marilyn Bautista  
 Mrs. Marisa Beck  
 Mr. & Mrs. Paul Beck  
 (Nancy English Beck SHP '58)  
 Mr. & Mrs. Brian Bell  
 Mr. & Mrs. Daniel Beltramo Sr.  
 Mr. & Mrs. Ronald Beltramo  
 Mr. & Mrs. Larry Benner  
 (Joan Argall Benner SHP '61)  
 Ms. Rosaria Bercow  
 Mrs. Joan Barry Bernstein (SHP '65)  
 Mr. Mark Bernstein & Dr. Jamie Sullivan  
 Ms. M'Lis Greenfield Berry  
 (SJSJH '77, SHP '81)  
 Mr. & Mrs. Anthony Bertolacci  
 Mr. Ernest Bianco  
 Ms. Kathleen Biehl  
 Mr. & Mrs. Simon Binns  
 Mr. & Mrs. Alessandro Biral  
 Mr. & Mrs. Terrence Blaine  
 Mr. & Mrs. Roger Blandford  
 Ms. Eileen Bocci  
 Boeing Company  
 Mr. & Mrs. Patrick Boesen  
 Ms. Bette Bohler  
 Mr. & Mrs. Brian Bokman  
 Mr. & Mrs. Ray Boller (Maria Assenza  
 Boller SJSJH '57, SHP '61)  
 Mr. William Bonnell  
 Mr. & Mrs. Emiliano Botello  
 Mrs. Stephanie Bowe Ullman

Mr. & Mrs. Charlie Bozzo  
 Mr. & Mrs. Kerry Bradford  
 Mr. Robert Bradford Jr. (SJSJH '60)  
 Ms. Rachael Brent  
 Ms. Elizabeth Brezinski (SHP '06)  
 Ms. Maggie Brezinski (SHP '08)  
 Mr. & Mrs. James Brisbois  
 (Barbara Olson Brisbois SHP '55)  
 Mr. & Mrs. David Brody  
 Mr. Barry Brown Jr. &  
 Ms. Giovanna Ferrari (SHP '96)  
 Mr. Tom Brownlee (SHP '01)  
 Mr. & Dr. Eric Brudos  
 Ms. Kristina Bruning (SHP '60)  
 Mr. Carter Brutschy (SJSJH '00, SHP '04)  
 Ms. Patrice Crumme Buck (SHP '72)  
 Mr. William Budge &  
 Mrs. Elena Eaton-Budge (SHP '50)  
 Mr. & Mrs. Michael Budelli (SHP '97)  
 Mr. Luis Buenrostro & Mrs. Emma Girron  
 Mr. & Mrs. Richard Bullene  
 (Kathleen Golden Bullene SHP '64)  
 Ms. Jennifer Buonafede  
 Mr. & Mrs. Robert Buono  
 Mrs. Joan Hunt Burdick (SHP '49)  
 Mr. Jonathan Burke  
 Mr. & Mrs. Dennis Burke (Patricia  
 "Patty" Anton Burke SHP '57)  
 Ms. Victoria Burns  
 Mr. & Mrs. Gordon Burton  
 Ms. Whitney Burton (SHP '04)  
 Mr. Keoki Cabral  
 C.M. Capital Corporation Foundation  
 Mr. & Mrs. Scott Cacchione  
 Ms. Ruth Cady  
 Ms. Barrie Callender (SJSJH '74, SHP '78)  
 Mr. & Mrs. Brent Callinicos  
 Mr. & Mrs. Christopher Camozzi  
 Ms. Darva Campbell  
 Mr. H. Keir Campbell & Ms. Cee Salberg  
 Ms. Jeannie Campbell-Urban (SHP '03)  
 Ms. Catherine Cannata  
 Ms. Linda Capello  
 Mr. & Mrs. Dennis Capovilla  
 Mr. & Mrs. Joseph Carcione Jr.  
 (Roberta "Bobbie" Mullin Carcione  
 SHP '65)  
 Mr. & Mrs. Rod Cardamone

Mr. & Mrs. Pedro Cardenas  
 Ms. Sonia Cardenas  
 Mr. & Mrs. Trinidad Cardenas  
 Mr. Vicente Cardenas &  
 Mrs. Monica Lazcano-Cardenas  
 Mr. & Mrs. Arnulfo Cardona Jr.  
 Mr. Carmelo Carlos &  
 Mrs. Erika Chavez-Carlos  
 Mr. & Mrs. Robert Carlson  
 Mr. & Ms. Jhonny Carrillo  
 Mrs. Rosa Cartagena  
 Mrs. Irma Case  
 Mr. & Mrs. Arthur Casey  
 (Mary Alice Spitters Casey SHP '76)  
 Mr. Gordon Casperson &  
 Ms. Janice Serpilio  
 Mr. & Mrs. Dante Cassanego (SHP '01)  
 Mr. & Mrs. Agustin Castillo  
 Mr. & Mrs. Martin Cattaneo  
 (Cherie "Cookie" Conway Cattaneo SH  
 Broadway '67)  
 Ms. Yvonne Caveney (SHP '71)  
 Mr. Dillon Chambers (SJSJH '02, SHP '06)  
 Ms. Virginia Cheney (SHP '67)  
 Hon. & Mrs. Al Chiantelli  
 (Carol Giurlani Chiantelli SHP '60)  
 Mr. Andrew Child (SHP '08)  
 Mr. Brandon Child (SHP '04)  
 Mr. Chris Child (SHP '02)  
 Ms. Laura Child (SHP '08)  
 Ms. Rebecca Child (SHP '06)  
 Ms. Amanda Chiuchiarelli  
 (SJSJH '00, SHP '04)  
 Mr. & Mrs. Jens Christensen  
 Mr. & Mrs. Harvey Christiansin  
 (Judith Dillon Christiansin SHP '56)  
 Chubb & Son, Inc.  
 Dr. Joseph Ciancaglini  
 Cisco Foundation  
 Dr. & Mrs. Terence Clancy  
 (Lisa Lippert Clancy SHP '79)  
 Mrs. Sandra Hales Clark (SHE '50, SHP '54)  
 Mr. Jerome Clarke &  
 Ms. Lushorn Williams  
 Mr. & Mrs. Stephen Clements  
 Mr. Seamas Clerkin &  
 Mrs. Rosita Lopes Clerkin

Mr. Richard Cline & Mrs. Julie Pietrantonio  
Ms. Geraldine Clinton  
Mr. & Mrs. Richard Cody  
Mr. & Mrs. Daniel Coffey  
Mr. & Mrs. John Cogan  
Mr. John Cole & Ms. Wendy Parker  
Ms. Bridget Collins  
Ms. Sharon Collins (Lone Mountain '69)  
Mr. & Mrs. James Compston (Marion  
Gilbert Compston SJSH '42)  
Ms. Shirley Connolly (Lone Mountain '58)  
Mr. & Mrs. James Connor  
Mrs. Louise Taggart Connors (SJSH '56)  
Mr. & Mrs. Peter Conway (Mary "Lyn"  
Horwitz Conway SHP '62)  
Ms. Iris Gilpin Copley (SHP '63)  
Mr. & Mrs. John Corpos  
Mr. & Mrs. Charles Coulson  
Mr. & Mrs. Kevin Coyne Sr.  
(Stuart Hall '63)  
Mrs. Jamie Craddock  
Ms. Laurie Cronin (SJSH '97, SHP '01)  
Dr. & Mrs. Alex Cross  
(Antonia Szilas Cross SHP '63)  
Mr. & Mrs. Terrence Cullen (SJSH '60)  
Mrs. Jane Dabo Cruz (SHP '62)  
Mr. Andrew Dahlkemper  
Ms. Sue Dahlkemper  
Mr. & Mrs. William Dailey III  
Mr. Ben Darya-Bari &  
Mrs. Afsaneh Rahili  
Mr. & Mrs. Michael Davidson (SJSH '80)  
Ms. Kristen Davison (SHP '04)  
Ms. Melissa Davison (SHP '07)  
Mr. & Mrs. Michael Davison  
Sister Barbara Dawson  
Mr. & Mrs. Manuel DeBattista  
Mr. & Mrs. William Decker  
Mr. & Mrs. Michael Deggelman  
Mr. & Mrs. Gregory DeLong  
Mr. & Mrs. Paul Denton  
Mr. & Mrs. Timothy Deppmeier  
Sister Patricia Desmond (SHE '45)  
Mr. Christian DeVivo (SHP '04)  
Dr. & Mrs. Douglas DeVivo  
Ms. Jessica DeVivo (SJSH '94, SHP '98)

Mr. & Mrs. Mark DeZutti  
Mr. & Mrs. Paul Di Pasquale (Katherine  
Kennedy Di Pasquale SHP '71)  
Ms. Jessika Diamond  
Mr. Isaias Diaz & Mrs. Herma Acevedo  
Mr. & Mrs. George Dinolt  
Sister Kathleen Dolan  
Mr. & Mrs. Frank Dowling  
Mr. & Mrs. Kirk Dryden  
Mrs. Nidia Dubria  
Mr. & Mrs. Benoit Dubuisson  
Mr. Alejandro Duenas  
Mr. George Duesdieker &  
Ms. Eileen Braunreiter  
Mr. Dale Duncan (SJSH '80) &  
Mrs. Eva Yuen  
Mr. & Mrs. James Dyer (Christine Lussier  
Dyer SHE '63, SHP '67)  
Mrs. Joan Eagleson  
Mr. & Mrs. Kevin Eagleson  
Ms. Ieshia Edgerton  
Mr. & Mrs. Cree Edwards (Jennifer  
Wiegand Edwards SJSH '79)  
Mr. Lawrence Eiselstein &  
Mrs. Barbara Eiselstein  
Mrs. Patricia Hardiman Eldred (SHP '52)  
Mr. Gus Elmashni  
Mr. & Mrs. Robert Enstad (Genevieve  
Bissell Enstad SJSH '71, SHP '75)  
Mr. & Mrs. Rick Espinoza  
Mr. & Mrs. David Evans (Kathleen "Kit"  
Sanders Evans SHP '64)  
Mr. & Mrs. Grant Evans  
Mr. & Mrs. Philip Evans  
Mr. James Everitt  
Mr. & Mrs. Kent Fagliano  
Mr. Alberto Farias & Ms. Sylvia Pintor  
Ms. Caroline Farrar (SHP '69)  
Mr. Albert Farrens (SJSH '42)  
Mrs. Virginia Imboden Faulk (SHE '40)  
Ms. Rosemary Feerick  
Mr. & Mrs. Steve Ferrando  
Dr. & Mrs. Bernardo Ferrari (SJSH '70)  
Ms. Jennifer Feyling (SJSH '91, SHP '95)  
Mr. & Mrs. Peter Filice  
Mr. & Ms. Daniel FitzSimons

Mr. Thomas Fleischli & Dr. Susan Garay  
Mr. & Mrs. Gerald Flerchinger  
(Lynette Holm Flerchinger SHP '79)  
Mr. & Mrs. John Flesher  
Sister Marie-Louise Flick  
Mr. Peter Florkiewicz  
Mr. & Mrs. Sam Folsom (Mary Texido  
Folsom SJSH '78, SHP '82)  
Mr. & Mrs. Mark Forbes  
(Patricia Ann McAuley Forbes SHP '75)  
Mr. & Mrs. Rick Forshaw (Michele  
Padberg Forshaw SHP '76)  
Ms. Carol Fowler  
Ms. Christina Fox (SHE '62)  
Estate of Lucile Fox (SHE '61, SHP '65)  
Dr. & Mrs. Clancy France  
Mr. & Mrs. Gregg Franceschi  
Mr. Steven Frank & Mrs. Pilar Bardina  
Frank (SJSH '88, SHP '92)  
Mr. & Dr. Robert Fraser  
Mr. & Mrs. Erland Frojelin Jr.  
(Sandra Lorenz Frojelin SHP '85)  
Mrs. Josephine Frydenlund  
Mr. Ding Fu & Ms. Nai Zhao-Fu  
Ms. Fatima Fuentes  
Mr. Leonsio Fuentes  
Ms. Elvera Fusco  
Dr. & Mrs. Peter Gage  
Mr. & Mrs. Elias Gaitan  
Mr. & Ms. Ernest Galaviz  
Dr. & Mrs. Juan Garona  
Mrs. Mary Gebhardt  
Mr. & Mrs. Steven Gerber  
Mr. & Mrs. David Geserick  
(Lisa McCloskey Geserick SHP '69)  
Ms. Leana Giannini (SHP '75)  
Mr. & Ms. Scott Gibson  
Mrs. Donna Gilboa  
Ms. Ronni Gilboa & Ms. Betty Johanna  
Sister Frances Gimber (SHE '47)  
Mr. & Mrs. John Giraudo  
(Mary Caldwell Giraudo SHP '61)  
Mrs. Cathleen O'Neil Girton (SHP '65)  
Ms. Ellen Golden  
Ms. Martha Golden (SHE '54, SHP '58)  
Mrs. Lorena Gonzalez  
Ms. Maria Gonzalez

Ms. Suzie Gonzalez  
 Mr. Tony Gonzalez  
 Mr. Scott Gooch & Ms. Sterrin Bird  
 Mr. & Mrs. Patrick Goodenough  
 Mr. & Mrs. Dan Gordon  
 Mr. & Mrs. Scott Gordon (Eva-Marie Schlosser Gordon SJSH '76, SHP '80)  
 Mr. & Mrs. Varish Goyal  
 Mr. & Mrs. Charles Gravelle  
 Mr. Charlie Greene (SHP '06)  
 Mr. Jamie Greene (SHP '04)  
 Mr. & Mrs. Dan Greenleaf  
 Ms. Kelli Griffis  
 Mr. & Mrs. Joshua Griffith  
 Mr. & Mrs. Charles Griner  
 Ms. Connie Guerrero  
 Mr. & Mrs. Tony Gundogdu  
 Dr. Louis Halamek &  
     Mrs. Katherine O'Connor  
 Mr. Keith Halcovich  
 Mr. David Hall  
 Mr. Harry Hall &  
     Mrs. Barbara Lamb-Hall  
 Mr. & Mrs. Lee Hall-Mineau  
     (Helen Boren Hall-Mineau SHE '45, SHP '49, Lone Mountain)  
 Dr. & Mrs. Scott Hallsted  
 Mr. & Mrs. Joe Halpin  
     (Julie Davis Halpin SHP '84)  
 Mr. & Mrs. Brian Hamilton  
 Ms. Ashley Hannebrink (SHP '03)  
 Mr. Mark David Hanson, Jr. (SHP '06)  
 Ms. Sarah Hanson (SHP '08)  
 Mr. & Mrs. Jeffrey Hardy  
 Mrs. Lee Collins Harnett (SHP '51)  
 Mr. & Mrs. James Harris  
 Mr. Keith Hashiguchi & Mrs. Denise Voll  
 Mr. & Mrs. Frederick Hatton  
 Mr. & Mrs. George Heath  
     (Louise Cava Heath SHP '54)  
 Mr. Christian Hebert (SJSH '02, SHP '06)  
 Mr. & Mrs. Klaus Hedbabny (Katarina Hartung Hedbabny SHP '57)  
 Mr. & Mrs. Brian Heffernan  
     (Mary Simonson Heffernan SHP '96)  
 Mr. & Mrs. Todd Hemm

Mr. & Mrs. John Hennessy III  
 Mr. & Mrs. Juan Hernandez  
 Mr. & Mrs. Michael Higgins  
 Dr. Dwight Hill & Dr. Priscilla Lu  
 Mrs. Faith Hill  
 Mr. & Mrs. Robert Hill  
     (Lindsay Galloway Hill SHP '76)  
 Mrs. Nell Hines  
 Mr. & Mrs. Harold Hjelm (Patricia Doherty Hjelm SJSH '47)  
 Mr. & Mrs. Binh Ho  
 Mr. Malcolm Hobbs & Mrs. Jill Lee  
 Mrs. Agatha de Marthon Hoff  
     (SHE '50, SHP '54)  
 Mr. & Mrs. Kermit Holderman  
 Mr. Tyler Holland (SHP '04)  
 Mrs. Ann Marie Holloway  
 Mr. Steven Holoien & Ms. Cathryn Chinn  
 Mr. & Mrs. Bob Hopkins  
 Mr. Robert Horsley &  
     Ms. Laura Hamilton  
 Mr. & Mrs. Douglas Hosking  
 Mr. & Mrs. Joe Hourigan  
     (Barbara Upton Hourigan SHE '52)  
 Mr. & Mrs. Jeffrey Housenbold  
 Ms. Dawna Houston  
 Mr. Kenny Howell & Ms. Peggy O'Leary  
 Mr. James Hughes & Ms. Karen E. Eshoo  
     (SJSH '83, SHP '87)  
 Mr. Benjamin Hunter  
 Mr. & Mrs. Bill Hvidt  
 Mr. & Mrs. Christian Ibanez  
     (Kathleen O'Leary Ibanez SHP '46)  
 Illusions Activewear, Inc.  
 Ms. Barbara Intersimone  
 Mr. & Mrs. Kristian Iskandar  
 Mr. & Mrs. Leon Ivery  
 Mrs. Toni Townsend Jacobs  
     (SH Forest Ridge '76)  
 Mr. & Mrs. Justin James  
 Ms. Alex Jamieson (SHP '00)  
 Dr. Adam Jarczewski &  
     Ms. Janina Pawlowski  
 Ms. Louisa Jenkins (SHP '43)  
 Ms. Sandra Jenkins  
 Mr. Charles Jennings &  
     Ms. Tristi Nichols (SHP '85)  
 Ms. Audra Johnson

Mrs. Louise Johnson  
 Ms. Maura McAniff Johnson (SHP '80)  
 Mr. & Mrs. Matthew Johnston  
     (Lorraine Podesta Johnston SHP '61)  
 Dr. & Mrs. A. Peter Jollymour III  
 Ms. Libby Jones  
 Ms. Rebecca Jones  
 Mr. & Mrs. Stephen Joy  
 Mr. & Mrs. William Joyce  
 Ms. Shereda Julian  
 Mrs. Ines Fatjo Kalend (SHP '49)  
 Mr. & Mrs. Kyle Kalmbach  
 Ms. Mary Nadine Kane  
 Mr. Christopher Kanelopoulos  
 Mr. & Mrs. Gary Kato  
     (Susan Grant Kato SHE '68)  
 Mrs. Mary Alice Brown Keeble (SHE '27)  
 Mr. & Mrs. Melvin Kelln  
 Mrs. Kristen Kelly  
 Mr. & Mrs. Stanley Kennedy Jr.  
 Mr. Alexandre Khodaverdi &  
     Mrs. Paula Carter-Khodaverdi (SHP '73)  
 Mr. John Kiefer  
 Mrs. Sheila Doyle Kiernan (SHP '44)  
 Ms. Stephanie Kinser  
 Ms. Patrice Koeten-Stuereberg  
 Mr. Rob Koeten  
 Mr. Daniel Kokkos  
 Ms. Camille Konopnicki (SJSH '97, SHP '01)  
 Mr. & Mrs. Maarten Koornwinder  
 Mr. & Dr. Thomas Kornei  
     (Mary Schulein Kornei SHP '65)  
 Mr. Alan Kornfield &  
     Mrs. Genette Yogi Kornfield  
 Mr. & Mrs. Hal Korol  
 Mr. & Mrs. Peter Kramer (SJSH '53)  
 Mr. Brian Kreutzcamp  
 Mr. & Mrs. Franz Krieg  
 Mr. Paul Kirincich & Mrs. Kelly Kruse  
 Mr. & Mrs. James Labe  
 Dr. Elena Labrada  
 Ms. Courtney Laird (SHP '00)  
 Dr. Pablo Lapuerta &  
     Ms. Rachelle M. Bin Lapuerta  
 Ms. Ana Maria Lasala

Mr. & Mrs. Peter Lavorato  
Ms. Lushorn Lee  
Ms. Anna Rochelle LeGrandsawyer  
(SHP '04)  
Dr. Tom Leonard &  
Mrs. Linda Graham (SHP '67)  
Mr. Guy Letteer  
Ms. Jennifer Lettieri  
Ms. Marta Levison (SHP '89)  
Ms. Nancy Lewis  
Mr. & Mrs. Joseph Licolli  
Mr. Michael Lim (SHP '06)  
Mr. & Mrs. Ronald Lim  
Mr. & Mrs. Robert Lindblom  
Mrs. Molly Molloy Linneman (SHP '59)  
Ms. Yesenia Lira  
Mr. & Mrs. Mark Lockareff  
Mr. & Mrs. Gary Lodi (SJSJH '60)  
Ms. Courtney Loomis (SJSJH '96, SHP '00)  
Mr. Alfonso Lopez  
Mr. & Mrs. Carlos Lopez (Eveleen  
Johnston Lopez SJSJH '49, SHP '53)  
Mr. John Loschmann  
Mr. Stewart C. Lotz & Mrs. Jane Hanley  
Lotz (SHE '44, SHP '48)  
Mr. David Low & Mrs. Diane Slavin-Low  
Mr. Christopher Lucier (SJSJH '83)  
Mr. & Mrs. Dan Lucier (SJSJH '77)  
Mr. & Mrs. Jack Lucier  
Mr. & Mrs. Everardo Luna  
Mr. & Mrs. James Lussier  
Mr. Charles Lynch  
Mr. & Mrs. Denis Lynch  
Mrs. Linda Lynch  
Mr. & Mrs. Thomas Lynch  
(Genevieve Olwell Lynch SHP '50)  
Ms. Leticia MacGinley  
Mr. George Macpherson &  
Ms. Phiania Smith  
Macy's West G.I.F.T. Campaign  
Mr. & Mrs. Tobias Madrigal  
Mr. & Mrs. Richard Madsen  
(Patricia Woods Madsen SHP '56)  
Mrs. Sara Young Maennle (SHP '89)  
Mr. & Mrs. Patrick Maher  
(Cathy McCormack Maher SHP '71)

Mrs. Alice Doyle Mahoney (SHP '40)  
Ms. Sally Mahoney  
Mr. Nicholas Maier &  
Mrs. Heather Martin-Maier  
Mr. Jaime Maldonado Aguilar &  
Mrs. Esmeralda Maldonado  
Mr. & Mrs. Sudhir Mallya  
Mr. & Mrs. Jeffrey Manos  
Dr. & Mrs. Philippe Marco  
Mr. Mike Marino (SHP '05)  
Mr. & Mrs. Raymond Marino II  
Mrs. Patricia Charkins Marques  
(SHE '55, SHP '59)  
Ms. Anne Marr (SHP '96)  
Mr. & Mrs. Jerry Marr  
(Elizabeth "Betsy" Barth Marr SHP '59)  
Ms. Julie Marr (SJSJH '71, SHP '75)  
Mr. Carlos Marrón &  
Ms. Dora Arredondo-  
Mr. & Mrs. John Marsal  
Mr. & Mrs. Michael Martin  
Ms. Michelle Martin  
Mr. & Mrs. Anthony Martinelli  
Ms. Elizabeth Mason (SJSJH '02, SHP '06)  
Mrs. Marjorie Mason  
Mr. & Mrs. Charles Mathews  
(Sheila Howe Mathews SHP '58)  
Ms. Stephanie Mathews  
Ms. Lisa Maxson  
Mr. Christian Mayor & Ms. Kristan Coday  
Mr. & Mrs. Ryan Maynard  
(Aoife Dowley Maynard SJSJH '83)  
Mr. & Mrs. Kevin McCarthy  
Mr. Geoffrey McCavitt (SJSJH '69) &  
Ms. Janet Gilmore  
Sister Mary Helen McComas  
Mr. Karl McCrary  
Mr. Raymond McDade &  
Mrs. Diemchi Nguyen  
Mr. & Mrs. Kevin McDonald  
(Julia Haynes McDonald SH Bloomfield  
Hills '85)  
Mr. & Mrs. Joseph McDonald  
(Susan Lochtefeld McDonald SHP '78)  
Ms. Corinne McHugh (SHP '98)  
Sister Joan McKenna

Mrs. Garratt McLellan  
Mr. & Mrs. Tom McLoughlin (SJSJH '41)  
Mr. & Mrs. Brian McMillan  
Mr. & Mrs. Donald McMorro Sr.  
Mrs. Therese McGettigan McNevin  
(SHP '57)  
Mr. Kevin Meisel (SJSJH '04, SHP '08)  
Mr. & Mrs. Rafael Melgoza  
Mr. & Mrs. Clifford Melim Jr.  
(Patricia Mahaney Melim SHP '55)  
Mr. & Ms. Christian Melberg  
Mr. & Mrs. Miguel Mendoza  
Ms. Brisbane Mendoza-Rodriguez  
Ms. Pallavi Menon (SHP '08)  
Dr. & Mrs. Satish Menon  
Mr. & Mrs. Andres Mera  
Mr. & Mrs. Ken Merrill  
Mr. & Mrs. Tom Merz  
(Mimi Breen Merz SHP '63)  
Mr. Jeffrey Mezzocchi  
Mr. & Mrs. William Mifsud  
(Pauline Dabo Mifsud SHP '61)  
Ms. Jenny Miller (SJSJH '99, SHP '03)  
Ms. Kelly Miller (SJSJH '92, SHP '96)  
Mr. Jake Moffat & Dr. Elizabeth DuBose  
Mr. J. Kelly Monaghan &  
Ms. Marilyn Voelke  
Ms. Margaret Moore (SHE '37)  
Mr. & Mrs. Robert Moore (Paulette  
Schwartz Moore SHP '68)  
Mr. & Ms. Walter Moore  
Mr. & Mrs. Mark Mordell  
Mr. Efred Moreno & Mrs. Maria Bravo  
Mrs. Teresa Moreno  
Mr. John Morey Jr. (SJSJH '50)  
Mr. & Mrs. Thomas Morgan  
Mr. & Mrs. Paul Morin  
Mrs. Julie Glockner Morris  
(SJSJH '81, SHP '85)  
Mr. Stuart Morris  
Mr. & Mrs. Patrick Morrissey  
(Miriam Michael Morrissey SHP '56)  
Mr. & Mrs. Lauro Mosso (SJSJH '55)  
Mr. & Mrs. Edward Moudry (Mary  
Moudry SH Lake Forest '73)  
Mr. John Murphy & Mrs. Kathleen Brosnan

Ms. Katie Murphy (SHP '05)  
Mr. & Mrs. Michael Murphy  
Mr. Mike Murphy (SHP '08)  
Mr. & Mrs. John Murray II  
Mr. & Mrs. Greg Myall  
Mr. & Mrs. Jack Myers-Buhite (Elizabeth  
"Libby" Myers-Buhite SHP '60)  
Mr. & Mrs. Steven Nagy  
Ms. Naoko Nakagawa  
Mr. & Mrs. Luis Navarro  
Mr. & Mrs. Charles Newton  
Mr. & Mrs. Nick Nicoli (SJSJH '34)  
Mr. Justin Nixon  
Mr. & Mrs. Carl Nordman  
Mr. John Norton & Ms. Diane Heditsian  
Ms. Nicole Norton (SJSJH '93, SHP '97)  
Mr. Pat Norton (SHP '04)  
Mr. Scott Norton (SJSJH '00, SHP '04)  
Dr. & Mrs. James Nourse  
Mr. & Mrs. William Odell  
Mr. & Mrs. Michael O'Donnell (SJSJH '70)  
Mr. & Mrs. Victor Ojeda  
Mr. John O'Leary (SJSJH '04, SHP '08)  
Mr. Andrew Olivier (SHP '07)  
Ms. Chris O'Neal (SJSJH '94, SHP '98)  
Mr. & Mrs. William O'Neal (Michelle  
Lastroto O'Neal SH Broadway '64)  
Ms. Marisol Ornelas  
Mr. Arturo Orocio & Mrs. Sonia Gonzalez  
Mr. & Mrs. Margarito Ortiz  
Dr. & Mrs. Brad Osgood  
Dr. Amado Padilla &  
Ms. Deborah Farrington Padilla  
Mr. & Mrs. Guillermo Paganini  
Ms. Mary Papsco (SHP '72)  
Mr. & Ms. Scott Parker  
Ms. Stephanie Parks  
Mr. & Mrs. Joseph Parsons  
Mr. Reid Particelli  
Mr. & Mrs. Bhupendra Patel  
Mr. & Mrs. Roger Patel  
Mr. Scott Paterson  
Ms. Louise Paustenbach  
Mr. & Mrs. Andres Perez Jr.  
Mrs. Virginia Perkins  
Mr. Anthony Peterson &  
Ms. Isolina Martinez

Mr. Keith Peterson  
Mr. & Mrs. John Petts  
(Carmen Rassier Petts SHP '67)  
Mr. & Mrs. Michael Phillips  
Ms. Ann Pickard (SHP '03)  
Mr. Miguel Pissani  
Mrs. Regina Pissani  
Mr. & Mrs. Marvin Pjesky  
Ms. Sherlene Pjesky  
Ms. Ashley Pogue (SHP '04)  
Mr. & Mrs. Stephen Pogue  
Ms. Aubrie Pollock (SHP '06)  
Mr. & Mrs. Ted Pollock  
Mr. Zach Pollock (SHP '05)  
Mr. & Mrs. Ken Ponce  
(Marielle Saussotte Ponce SHP '71)  
Mrs. Kelly Gallagher Pope (SHP '59)  
Mr. & Mrs. John Poppin (Anne Hughes  
Poppin SHE '50, SHP '54)  
Mr. & Mrs. John Porter (Mary Katherine  
Kroeger Porter SHE '55, SHP '59)  
Mr. & Mrs. John Powell  
Ms. Kelly Power  
Mrs. Lani Pringle  
Mr. & Mrs. Lamont Quattlebaum  
(Wendy Miller Quattlebaum SHP '93)  
Mr. & Mrs. Robert Quillin  
Mr. & Mrs. Richard Quinlan  
Mr. T. Anthony Quinn (SJSJH '55)  
Mr. & Mrs. Colin Quinton  
Ms. Sheila Sullivan Ra (SHP '63)  
Mr. & Mrs. Jack Raffel  
(Margaret Walsh Raffel SHE '47)  
Mr. & Mrs. Michael Ramey  
Ms. Lucinda Ramirez  
Mr. Jesus Ramos  
Mr. Andy Ramsay (SHP '03)  
Dr. & Mrs. Beatty Ramsay Jr.  
Ms. Christina Ramsay (SHP '07)  
Ms. Stephanie Ramsay (SHP '99)  
Mr. Greg Randall (SHP '08)  
Mr. Juan Rascon & Mrs. Maria Martinez  
Mr. & Mrs. Armando Recinos  
Mr. James Redfield  
Ms. Rachel Reese  
Mr. & Mrs. William Reese  
(Janet O'Keefe Reese SHE '56, SHP '60)

Mr. & Mrs. Timothy Reeves  
Mr. & Mrs. William Rehlich  
Mrs. Julie Marie Rench (SHP '89)  
Mr. & Mrs. Robert Rench  
Mr. Jorge Reyes  
Mr. Everth Reyna Rios &  
Mrs. Adriana Iberico  
Mr. & Mrs. Jeff Reynolds  
Mr. Matthew Richards (SJSJH '04)  
Mr. & Mrs. Thomas Richardson  
(Katarina Van Horn Richardson SHP '71)  
Mr. & Mrs. Michael Riordan (Maribeth  
Spelman Riordan SHE '50, SHP '54)  
Mr. & Mrs. William Rizzo  
(Elisa Shevlin Rizzo SHP '89)  
Ms. Angela Robbiano (SJSJH '72, SHP '76)  
Mrs. Margaret "Colleen" Craft Roberts  
(SJSJH '56)  
Mr. & Ms. Bruce Reinik (Mary Keith  
Roberts Reinik SHE '63, SHP '67)  
Mr. Patrick Roberts  
Mr. & Mrs. John Rodee (Maribeth  
Mattinson Rodee SHP '61)  
Mr. Carlos Rodriguez  
Mr. & Mrs. Frank Rodriguez  
Mr. Marin Rodriguez  
Mr. Rafael Rodriguez  
Mr. & Mrs. Dennis Rohan  
Roller, Hapgood & Tinney  
Ms. Michele Crosthwaite Rose  
(SHE '55, SHP '59)  
Mrs. Michelle Araquistain Rose (SHP '77)  
Ms. Gayle Rosenberg  
Sister Martha Roughan  
Cdr. & Mrs. Frank Rouse (SJSJH '59)  
Mrs. Margaret Ford Rouse (SHP '51)  
Ms. Lisa Ruan  
Ms. Skye Russon  
Sister Mary Pat Ryan  
Dr. & Mrs. David Sachs  
Mr. Shahab Sadat-Tehrani &  
Mrs. Nazila Habibizad  
Mr. & Mrs. John Salera  
Mr. & Mrs. Enrique Sanchez  
Dr. & Mrs. George Savage  
Mr. Aziz Sayigh (SJSJH '99, SHP '03)

Mr. Samer Sayigh (SHP '04)  
 Ms. Carol Schaffer  
 Mr. Jack Scheiffy (SHP '04)  
 Sister Dolores Schembri (SJSJH '43)  
 Mr. & Mrs. Roderick Scherba  
 Mrs. Mona Somavia Schoenwisner  
 (SHP '55)  
 Mr. & Mrs. David Scholz  
 (Charlotte Maytham Scholz SHP '55)  
 Mr. William Schreiber  
 Mr. Douglas Schultz  
 Mr. Christopher Scott  
 Ms. Susan Seely  
 Mr. & Mrs. David Selby  
 Mr. & Mrs. Matt Shane  
 (Kelli Miller Shane SHP '98)  
 Mr. & Mrs. George Shannon  
 (Carol Michael Shannon SHP '55)  
 Mr. & Mrs. William Shaw  
 Mr. & Mrs. Karl Sherwood-Coombs  
 Mr. Sergei Shev (SHP '05)  
 Mr. & Mrs. Michael Siddens  
 Ms. Genny Sidone (SJSJH '98, SHP '02)  
 Mr. Ian Simon (SHP '04)  
 Mr. & Mrs. John Simonson  
 Mr. Alan Simpson-Vlach  
 Mr. Jason Simpson & Ms. Rachel Prouty  
 Mr. & Mrs. Dean Sivara  
 Mr. William Skaff  
 Dr. & Mrs. Stewart Slafter  
 Mr. Brandon Smith (SHP '06)  
 Mr. Thomas Smith & Ms. Linda Mak  
 Mr. & Mrs. Edward Smyth  
 Mr. & Mrs. Rick Smyth  
 Ms. Ella Sokolova  
 Mr. & Mrs. Raymond Solari  
 Mr. & Mrs. Mark Soltau  
 (Valerie Dewey Soltau SJSJH '73, SHP '77)  
 Mr. Fred Sommer  
 Mr. & Mrs. Morris Sorrells  
 (Diane Murphy Sorrells SHE '56)  
 Mr. & Mrs. Brian Sours  
 Mr. Chris Spano  
 Mrs. Julie Smith Spearman  
 (SHE '34, SHP '38)  
 Ms. Jessica Sperle

Mr. & Mrs. Thomas Spieker  
 Mrs. Julie Spillane  
 Mr. & Mrs. Arthur Squillante  
 Ms. Bridget Geibel Stefanski (SHP '01)  
 Mr. & Mrs. Frank Stegmiller (Carol  
 Seibold Stemiller SHE '51, SHP '55)  
 Mr. & Mrs. Fred Stein (SJSJH '43)  
 Mr. & Mrs. Joe Stickney (SJSJH '61)  
 Mr. & Mrs. Christopher Straube  
 Mr. & Mrs. Joseph Surzyn  
 Mr. John Sutherland (SHP '02)  
 Ms. Kathryn Sutherland (SHP '07)  
 Mr. & Mrs. Gerrit Swart  
 Ms. Marie-Clarisse Swinkels (SHP '04)  
 Mrs. Edie Switzer  
 Ms. Myra Syed  
 Synopsys Employee Philanthropic  
 Programs  
 Mr. & Mrs. Ken Tailo  
 Mr. & Mrs. Wessel Tait  
 Mr. & Mrs. Sam Tallerico  
 Mr. & Mrs. Ed Tangitau  
 Mr. Sergio Tapia & Mrs. Maria Tapia  
 Mr. & Mrs. Paul Tarantino  
 Target Take Charge of Education  
 Mr. & Mrs. Michael Taverna  
 Mr. & Mrs. Philip Taylor  
 Ms. Paige Tecca (SHP '84)  
 Mrs. Judith Thams (SHP '56)  
 Mr. & Mrs. George Michael Thibodeau  
 (Nancy Lucas Thibodeau SHP '71)  
 Mr. & Ms. Ravi Thomas  
 Mrs. Susan Davidson Thomas  
 (SHE '51, SHP '55)  
 Mr. Bradley Thompson (SHP '04)  
 Mr. & Mrs. Kenneth Thompson  
 Mr. & Mrs. David Thrasher  
 (Anne-Marie Leslie Thrasher SHP '85)  
 Dr. & Mrs. Fouad Tobagi  
 Mr. & Mrs. Alex Tong  
 Dr. & Mrs. Vincent Tornabene  
 Ms. Sandra Tozzini (SHP '67)  
 Mr. & Ms. Rogelio Trejo  
 Dr. Kern Trembath &  
 Dr. Sally Vance-Trembath  
 Mr. Barry Treseler & Ms. Claire Dean

Ms. Alison Trujillo  
 Mr. & Mrs. Carlos Turchetti  
 Ms. Elodie Turchi (SJSJH '02, SHP '06)  
 Dr. & Mrs. Patrice Turchi  
 Mr. & Mrs. Simon Turner  
 Ms. Corie Tyson  
 Ms. Hui-Yuan Ueberschaer  
 Mr. & Mrs. Clifford Vaida  
 Mr. Armando Valdez &  
 Ms. Maria Buenrostro  
 Mr. & Mrs. Bruce Van Alstyne  
 (Betsy Clark Van Alstyne SHP '74)  
 Mr. & Mrs. John Van Dyke III  
 Ms. Dana Van Wyk  
 Mr. & Mrs. Jeff Van Zanten  
 Mr. & Mrs. Louis Vanoli  
 Mr. Jason Varga (SJSJH '91, SHP '95) &  
 Ms. Audrey Eve Harper  
 Mr. & Mrs. Peter Varga  
 Mr. & Mrs. Douglas VauDell  
 Mr. Luis Vazquez  
 Ms. Sandra Vickers  
 Mr. Grant Villeneuve (SJSJH '05)  
 Ms. Nicole Villeneuve (SJSJH '03, SHP '07)  
 Mr. & Mrs. Raymond Villeneuve  
 Village Stationers Inc.  
 Visa International's Employee Giving  
 Campaign  
 Dr. Chris Visser &  
 Dr. Ann Young-Visser (SHP '68)  
 Ms. Genevieve Vulser  
 Mr. & Mrs. Derek Waarich  
 Mr. & Mrs. Scott Wachhorst (SJSJH '81)  
 (Sydney Baker Wachhorst SJSJH '84)  
 Mr. & Mrs. Alexander Walker  
 (Gloria Troglio Walker SJSJH '56)  
 Mr. & Dr. Jonathan Walker  
 Mr. J. Peter Walker &  
 Ms. Megan Harbison  
 Mr. & Mrs. Hugh Walsh (Joanne White  
 Walsh SJSJH '56, SHP '60)  
 Mr. & Mrs. Richard Warren Jr. (SJSJH '77)  
 Mr. & Mrs. Lee Watson  
 Mr. & Mrs. Timothy Watterson  
 Dr. & Mrs. Stuart Weisman

Mr. & Mrs. William Wellman  
(Florence Anton Wellman SHP '59)  
Mr. Dylan Wengert (SHP '06)  
Mr. & Mrs. William Weseloh (Jeanne  
Kernan Weseloh SJSH '49, SHP '53)  
Mr. & Mrs. Geoffrey Westerfield  
Mr. & Mrs. Steve White  
(Leslie Rice White SJSH '52)  
Mr. Christopher Whittam (SHP '04)  
Ms. Lauren Whittam  
Mrs. Sibylle Whittam  
Mr. & Mrs. Thomas Wiggans  
Mr. Doug Wigley (SHP '05)  
Mr. Ryan Wigley (SHP '08)  
Mr. & Mrs. William Wigley  
Mr. & Mrs. George Wildey  
(Janet Dyer Wildey SJSH '65, SHP '69)  
Mr. Thomas Wildman  
Mr. & Mrs. Hugh Wilkins  
Mr. & Ms. Larry Williams  
(Nancy Buchanan Williams SHE '56,  
SHP '60)  
Ms. Serene Williams  
Mr. & Mrs. John Wilson  
Ms. Kimberly Winer  
Mr. Drew Wong (SJSH '87)  
Mr. & Mrs. Stewart Wong  
(Janet Cheung Wong SHP '85)  
Mr. & Mrs. Thomas Wong  
Mrs. Belinda Wong-Swanson (SHP '74)  
Mr. & Mrs. Raymond Woo  
Mr. Chris Wood (SJSH '00, SHP '04)  
Mr. & Mrs. Christopher Wood  
Ms. Vanessa Woods  
Mr. & Mrs. Jim Woodson  
Ms. Lindsey Woodson (SJSH '97, SHP '01)  
Mr. & Mrs. Jack Wooton  
Dr. Constance Wright (SHP '46)  
Mr. John Wright &  
Mrs. Carol Fulton Davis (SHP '74)  
Mr. & Mrs. Ken Yagen  
Ms. Lynne Young  
Ms. Roseanne Wilson Ziegler  
(SHE '56, SHP '60)

Mr. Tom Zigterman &  
Mrs. Alicia Restrepo-Zigterman  
Mr. Joseph Zucca & Mrs. Ruth Victorino  
Mr. & Mrs. Secundino Zuno

## ANNUAL FUND DAY VOLUNTEERS AND PLEDGE DAY

We would like to thank the 2008-2009 Annual Fund Volunteers for their hard work and dedication.

### Sacred Heart Preparatory Annual Fund Chair

Joanie Cattermole

### Sacred Heart Preparatory Grade Level Volunteers

Lennie Gotcher  
 Felicia Horowitz  
 Sue Lockwood  
 Molly McKenna  
 Susan Myers  
 Frank Rodriguez  
 Patty Rodriguez  
 Montye Rodgers  
 Mary Rudolph  
 John Schreiber  
 Robin Schreiber  
 Linda Thaire  
 Trish Turner  
 Lori Nawn

### St. Joseph's School of the Sacred Heart Annual Fund Chair

Sara Steppe

### St. Joseph's School of the Sacred Heart Grade Level Volunteers

Helen Baer  
 Diana Beltramo Hewitt (SJSH '83, SHP '87)  
 Dawn Bokman  
 Sarah Buckley Stuart (SJSH '83, SHP '87)  
 Kelly McGann Burke  
 Letty Callinan  
 Ann Farnham  
 Laurie Farros  
 Barbara Frome  
 Elizabeth Hammack  
 Bob Hellman  
 Lisa Henske  
 Sharon Herrell  
 Amy Higgins  
 Eleanor Huh  
 Sandy Levison



*Front left to right: Chris Surowiec, Amy Higgins, Virginia Wanger, Lori Nawn, Lisa Henske, Susie Frimel*

*Back left to right: Betsy Plaschke, Deb McLean, Linda Thaire, Liz Maples, Mary Henry, Heather Young, Sandy Levison, Stephanie Lane, Letty Callinan*

Liz Maples  
 Debra McLean  
 Leisl Moldow  
 Sara Mustarde  
 Lori Nawn  
 Zod Nazem  
 Donna Neff  
 Lisa Pica  
 Betsy Plaschke  
 Bob Plashcke  
 Bill Romans  
 Theresa Rowland  
 Patty Sanchez  
 Chris Surowiec  
 Kathleen Texido  
 Linda Thaire  
 Alison Van Dyke  
 Stephanie von Thaden  
 Virginia Wanger  
 Heather Young

### Pledge Day Chairs

Debra McLean  
 Chris Surowiec

### Pledge Day Volunteers

Helen Baer  
 Diana Beltramo Hewitt (SJSH '83, SHP '87)  
 M'Lis Greenfield Berry (SJSH '77, SHP '81)  
 Dawn Bokman  
 Sarah Buckley Stuart (SJSH '83, SHP '87)  
 Kelly McGann Burke  
 Letty Callinan  
 Laurie Farros  
 Susie Frimel  
 Barbara Frome  
 Emma Goltz (SH Ireland)

Elizabeth Hammack  
 Mary Henry  
 Lisa Henske  
 Amy Higgins  
 Kristina Homer  
 Sharon Herrell  
 Kelly Kruse  
 Stephanie Lane  
 Sandy Levison  
 Liz Maples  
 Liesl Moldow  
 Lori Nawn  
 Zod Nazem  
 Betsy Plaschke  
 Theresa Rowland  
 Sandra Smith  
 Kathleen Texido  
 Linda Thaire  
 Virginia Wanger  
 Heather Young

---

## SHAKE, RATTLE AND ROLL DINNER PARTY 2009

### Party Chairs

Mrs. Tish Krieg  
Mrs. Liz Maples  
Mrs. Barbara Moran

### Auction Chairs

Mrs. Jacque Jarve  
Mrs. Linda Thaire  
Ms. Sibylle Whittam

### Logistics Chairs

Ms. Katherine Aitken-Young  
Ms. Kim Aitken-Young

### Item Donors

Mrs. Polly Abe  
Academic Trainers  
Mrs. Maryan Ackley  
Advantage Testing of Silicon Valley  
The Aitken-Young Family  
The American Bull Bar & Grill  
Amici's East Coast Pizzeria  
Mr. & Mrs. Saeed Amid-Hozour  
Mr. Robert Angcay  
Mr. Jesus Angel  
Angela Women's Designer Apparel  
Anonymous (2)  
Another Planet Entertainment, LLC  
Ms. Stacey Ardelean  
Mr. Jeff Arons  
Ms. Dora Arredondo-Marrón  
Atherton Police Department  
Ms. Mariette Bacon  
Mr. John Baer & Mrs. Helen Baer  
Ms. Karen Bailey  
Mr. Refugio Balderrama  
Bank of the West  
Mrs. Ann Fay Barry (SHP '62)  
Bay Area Discovery Museum  
Mr. Brian Bell  
Ms. Mary Bellack  
Beltramo's Wines and Spirits

Beringer Vineyards  
Berkeley Repertory Theatre  
Mrs. Susan Bird  
Dr. Tina Bird  
Mrs. Nancy Blears  
Bobby Jones Golf Company  
Ms. Eileen Bocci  
Mrs. Virginia Boesen  
Mr. & Mrs. Stephen Boyden  
Broadway by the Bay  
Ms. Diane Brugos  
Buck's of Woodside  
Mrs. Brooke Budelli  
Mr. Luis Buenrostro  
Mrs. Janet Buncke  
The Burke Family  
Ms. Tori Burns  
Ms. Ruth Cady  
California Shakespeare Theater  
Callaway Golf Company  
Ms. Barrie Callender (SJSJ '74, SHP '78)  
Camp Gator  
Mrs. Roberta Campbell  
Mr. William Campbell  
Campton Place  
Ms. Linda Capello  
Mr. Pedro Cardenas  
Mr. Vicente Cardenas  
Castro Theatre  
Mrs. Cherie "Cookie" Conway Cattaneo  
(SH Broadway '67)  
Mr. & Mrs. Gregory Cattermole (SJSJ '70)  
Cavallo Point  
Classic Kids  
Mr. Seamus Clerkin  
Ms. Deenie Clinton  
Mr. & Mrs. Edward Cluss Jr.  
Coco To Go  
Ms. Bridget Collins  
Mrs. Jamie Craddock  
DPR Construction, Inc.  
Mrs. Stacey Davidson

Mr. & Mrs. Andre de Baubigny  
Mr. Greg Dertorossian &  
Mrs. Ashley Waters  
Mrs. Carol DeZutti  
Mr. Richard A. Dioli  
Mr. & Mrs. Timothy Draper  
Mrs. Sandy Dubinsky  
Mr. Alejandro Duenas  
Mr. & Mrs. Bruce Dunlevie  
Mrs. Christine Lussier Dyer  
(SJSJ '63, SHP '67)  
Mrs. Diane Eagleson  
Enchanted April Farm  
Mr. & Mrs. Jerry Evans  
Mr. James Everitt  
Exploratorium  
Mrs. Barbara Fallon  
Mr. Peter Florkevicz  
Mr. & Mrs. Mark Flynn  
Mr. Gregg Franceschi  
Mrs. Barbara Frome  
Mr. Leonsio Fuentes  
'g' Wine Cellars  
The Garrick Family  
Mrs. Donna Gilboa  
Gilroy Gardens Family Theme Park  
Mr. & Mrs. Rex Golding  
Mr. Jesus Gonzalez  
Ms. Maria Gonzalez  
Mrs. Lennie Gotcher  
The Greene Family  
Mr. Dan Greenleaf  
Mr. & Mrs. Tony Gundogdu  
Haiku by Sharon Eisenhauer  
Mr. Tim Haley & Dr. Ethna McGourty  
Mr. & Mrs. Paul Hammack  
Mr. & Mrs. Fredric Harman  
Mr. & Mrs. Kevin Harvey  
Mrs. Jennifer Hawks  
Mr. Bob Hellman  
Mrs. Renee Hellman  
Mr. & Mrs. Manuel Henriquez

Mr. & Mrs. David Henry  
Mrs. Lisa Henske  
Mr. Javier Hernandez  
Mr. Juan Hernandez  
Mr. & Mrs. Kelly Herrell  
Mrs. Diana Beltramo Hewitt  
(SJSJH '83, SHP '87)  
Hilary McMahon Photography  
Hiller Aviation Museum  
Hobee's California Restaurants  
Mr. Kermit Holderman  
The Homer Family  
Mrs. Karen Heaney Hook  
Mrs. Jill Howard  
Mrs. Shelley Hutter  
Mr. & Mrs. G. Thompson Hutton  
Mrs. Sally Hvidt  
Il Fornaio  
J. Wells Catering  
Mrs. Toni Jacobs (SH Forest Ridge '76)  
Mrs. Bonny James  
James Butler Interiors  
Ms. Alexandra Jamieson (SHP '00)  
Mr. & Mrs. John Jarve  
Ms. Lupita Jimenez  
Jumpstart Medicine  
K & L Wines  
The Barry & Anna Kane Family  
Ms. Mary Nadine Kane (SH Broadway '02)  
The Kaplan Family  
Mr. Fred Kelley  
Kiehl's  
Ms. Stephanie Kinser  
Kistler Vineyards  
The Kleid Group  
Mr. & Mrs. Bradford Koenig  
(Lauren Gray Koenig SJSJH '73, SHP '77)  
The Kohrs Family  
Kongsgaard Winery  
Dr. Marek Konopnicki &  
Ms. Barbara Pawlowski-Konopnicki  
Mr. & Mrs. Gregory Krikorian (SJSJH '73)  
Mr. & Mrs. James Labe  
Mr. & Mrs. Eric Lamb  
Mr. Randy Lamb &  
Mrs. Lisa Carey-Lamb

Landmark Theatres  
Mrs. Stephanie Lane  
Las Palmas Tennis  
Laurel Street Arts  
Leaf & Petal  
Leafhog  
Mr. & Mrs. Scott Lessing  
Mr. Guy Letteer  
Mr. & Mrs. David Levison  
Mr. & Mrs. Michele Libraro  
Mr. & Mrs. Joseph Licolli  
Mr. & Mrs. Daniel Lockwood  
The Lodge at Sun Ranch  
Mrs. Maria Lonergan  
Dr. & Dr. Michael Longaker  
Mr. Alfonso Lopez  
Mr. & Mrs. James Lussier  
Mr. & Mrs. Denis Lynch  
Mr. & Mrs. James MacGregor  
Mr. Ramiro Macias  
Ms. Losaline Malfileo  
Marin Symphony Association  
Marquis Jet  
Mrs. Susan Marsal  
Dr. Nancy Mason  
Mr. Scott McDade  
The McLean Family  
Mrs. Zenaida Melgoza  
Mr. Christian Mellberg  
Ms. Brisbane Mendoza-Rodriguez  
Mr. & Mrs. Ken Merrill  
Mr. Jake Moffat  
Mr. & Mrs. Mike Mohrman  
Mr. & Mrs. Peter Moore  
Mr. John Moragne & Ms. Kimberly Young  
Mr. & Mrs. Michael Moran  
Mr. & Mrs. Matt Moran  
Mrs. Gail Morey  
Mr. Bill Morgan & Mrs. Jeanine Morgan  
Mountain Play Association  
Museum of the African Diaspora  
Museum of Craft and Folk Art  
My Director's Cut  
Mr. & Mrs. Thomas Myers  
Ms. Paula Nawas  
Mrs. Lori Nawn

Neiman Marcus Union Square  
Nike Golf  
Nikki Beach Resort & Spa – Roatan  
Nola Restaurant & Bar  
Oakland A's  
The Oasis  
Dr. & Mrs. John O'Holleran  
The Old Pro  
Mr. & Mrs. Peter Oppenheimer  
Pacific Athletic Club  
Mr. Jared Palmer  
Mrs. Terry Palmer  
Ms. Louise Paustenbach  
Mr. Kenneth Pelowski & Ms. Lori Mirek  
Ms. Christie Perego (SJSJH '92, SHP '96)  
Mr. & Mrs. Mark Pitchford  
(Laura Daschbach SJSJH '73, SHP '77)  
Ms. Kelly Power  
Mr. Antonio Prieto  
Mrs. Lani Pringle  
Ms. Rachel Prouty  
Punch Line Comedy Club  
Putnam Lexus  
Mr. Lamont Quattlebaum  
Mr. & Mrs. Colin Quinton  
The Reading Clinic  
Mrs. Jan Reeves  
Ripley's Believe It or Not Museum  
Roberts Market Wine Department  
Mr. Carlos Rodriguez  
Mr. Marin Rodriguez  
Mr. Rafael Rodriguez  
The Rogers Family  
Mr. & Mrs. Daniel Rosensweig  
Mrs. Theresa Rowland  
Mrs. Mary Rudolph  
Mr. & Mrs. Rick Runkel  
Ms. Cee Salberg  
San Francisco Giants  
San Francisco Museum of Modern Art  
Sanrio  
Ms. Elke von Schlosser (SJSJH '70, SHP '74)  
Mr. Stephen Schwerdfeger  
Mr. & Dr. Stephen Seabolt  
SeaDream Yacht Club  
See's Candies

The Seussical Cast  
Mr. & Mrs. Bruce Sewell  
Mrs. Diane Sexton  
Dr. & Mrs. David Shen  
SHP Faculty & Staff  
SHP Parent Association Board Members  
SHP Tennis Teams  
SHP Theatre Department  
Shutterfly, Inc.  
Skin Sanctuare  
Mr. Stewart Slaughter  
Mr. & Mrs. Mark Soltau  
(Valerie Dewey Soltau SJSJH '73, SHP '77)  
Sonoma Spa on the Plaza  
Ms. Jessica Sperle  
Mrs. Kathy Spieker  
Mr. Art Squillante  
The Stanford Court Hotel  
Staprans Design  
Mr. & Mrs. Stephen Steppe  
Mrs. Terri Straube  
Mr. & Mrs. Jose Suarez  
Sugar Shack  
Sundance Institute  
Sundance The Steakhouse  
Ms. Deborah J. Taylor  
Ms. Nadine Taylor-Barnes  
Ms. Tamra Tehaney  
The Terpening Family  
Tesla Motors  
The Thaire Family  
TheatreWorks  
Mr. & Mrs. John Thompson  
Mr. Ken Thompson  
Mr. & Mrs. Richard Thompson  
Tiffany & Co.  
Mrs. Susan Walsh Tinsley (SJSJH '79)  
Mrs. Beth Tornabene  
Town  
Mr. Thanos Triant & Mrs. Ingrid Marlow  
Mr. James Tung & Ms. Elaine Tse  
Mrs. Carolyn Tuomala  
Tutorpedia  
Mr. Val Vaden & Ms. Lilli Rey

Mrs. Jennifer Vaida  
Vanilla Moon Bakery  
Mr. Luis Vazquez  
Velocity Sports Performance  
Vespa San Francisco  
Mr. & Mrs. John Walecka  
Walton's Grizzly Lodge Summer Camp  
Wax Museum at Fisherman's Wharf  
Ms. Sibylle Whittam  
Mr. Tom Wildman  
Mr. & Mrs. David Wilkinson  
Ms. Serene Williams  
Mr. Raymond A. Woo  
Ms. Vanessa Woods  
Mr. & Mrs. Gideon Yu  
Zen Day Spa  
Mr. Kevin Zerber

#### **Underwriters and In-Kind Donations**

##### **I Love Lucy - (\$20,000 or greater)**

Anonymous  
Mrs. Roberta Campbell  
Mr. William Campbell  
Mr. & Mrs. Bruce Dunlevie  
Mr. & Mrs. Kevin Harvey  
The Rogers Family

##### **The Honeymooners - (\$10,000 - \$19,999)**

The Callinan Family  
Mr. & Mrs. Robert Ceremsak Jr.  
The Harman Family  
Mr. & Mrs. Bradford Koenig  
(Lauren Gray Koenig SJSJH '73, SHP '77)

##### **The Adventures of Ozzie & Harriet - (\$5,000 - \$9,999)**

Mr. & Mrs. Scott Bohannon  
Mr. & Mrs. Ronald Conway  
(Stuart Hall '66)  
Mr. Dennis DeBroeck &  
Ms. Nancy Heinen  
Mr. & Mrs. David Dollinger  
Mr. & Mrs. John Donahoe Sr.  
Mr. & Mrs. John Holloway  
(Ann Marie Crowley Holloway  
SH Newton '73)

Mr. John Kerrigan &  
Mrs. Elizabeth Kerrigan  
(Elizabeth Hunter Kerrigan SJSJH '78,  
SHP '82)  
Mr. & Mrs. Raymond Lane  
Mr. & Mrs. Peter Oppenheimer  
Mr. & Mrs. Thomas Seaney  
Mr. & Mrs. Bruce Sewell

##### **Leave it to Beaver - (\$2,500 - \$4,999)**

Mr. & Mrs. Peter Clark  
In Honor of Gary Alan Gavello  
Mr. Tim Haley & Dr. Ethna McGourty  
Mr. & Mrs. Ron Johnson  
Mr. Randy Lamb &  
Mrs. Lisa Carey-Lamb  
Mr. & Mrs. James McLean  
Mr. & Ms. Hans Plesman  
Mr. Alan Salzman &  
Mrs. Jillian Manus-Salzman  
Mr. & Mrs. John Thompson  
Mr. & Mrs. Michael Wishart Sr.  
Mr. Pierluigi Zappacosta &  
Mrs. Enrica D'Ettorre

##### **Father Knows Best - (\$1,000 - \$2,499)**

Mr. & Mrs. Stephen Ackley  
Mr. & Mrs. Robert Chaplinsky  
Mr. & Mrs. Edward Cluss Jr.  
Mr. & Mrs. Paul DiNardo  
Mr. Jon Duane &  
Mrs. Cathy Friedman Duane  
Mr. & Ms. Thomas Fallon  
The Gaddis Family  
The Garrick Family  
Mr. & Mrs. Peter Gotcher  
Mr. & Mrs. David Henry  
Mr. & Mrs. Stephen Rudolph  
Mr. & Mrs. Rick Runkel  
Mr. & Mrs. Walter Sedgwick  
Dr. Harry Whitehouse &  
Dr. Wendy Rabinov

**Dragnet - (\$500 - \$999)**

Assured Relocation  
Dr. Kurt Bausback & Dr. Mary Kiely  
Mr. Greg Dertorossian &  
Mrs. Ashley Waters  
Dr. Marek Konopnicki &  
Ms. Barbara Pawlowski-Konopnicki  
The Pitchford Family  
Pribuss Engineering

**General Underwriting – (Up to \$499)**

Mrs. Julie Bell  
Mr. & Mrs. Colin Quinton  
Mrs. Ann Fay Barry (SHP '62)  
Mr. & Mrs. William Kohrs  
Mr. & Mrs. Murphy  
Mr. Jim Russell &  
Mrs. Jane Haake-Russell  
Mr. & Mrs. Paul Rydberg  
Mr. & Mrs. Rick Smyth

**Faculty Sponsorship**

Dr. & Mrs. Ken Abe  
The Aitken-Young Family  
Mr. & Mrs. Saeed Amid-Hozour (Samia  
Vakhshour Amid Hozour SHP '88)  
Mr. & Mrs. Douglas Bergeron  
Mr. & Mrs. Dan Brosnan  
Dr. & Mrs. Gregory Buncke M.D.  
Dr. & Mrs. Kirk Churukian  
Mr. & Mrs. Kevin Coyne Sr.  
Mr. & Mrs. Jeffrey Drazan  
Mr. & Mrs. Bruce Dunlevie  
Mr. & Mrs. Stephen Gaddis (SHP '68)  
Mrs. Ann Fay Barry (SHP '62)  
Mr. & Mrs. Patrick Geary  
Mr. & Mrs. Robert Glockner  
Mr. & Mrs. Frederick Goltz  
(Emma Goltz SH Ireland)  
Mr. & Mrs. Peter Gotcher  
Mr. Tim Haley & Dr. Ethna McGourty  
Mrs. Renee Hellman

Mr. & Mrs. David Henry  
Mr. & Mrs. Kurt Jagers  
Mr. & Mrs. John Jarve  
Mr. & Mrs. Bradford Koenig  
(Lauren Gray Koenig SJSJ '73, SHP '77)  
Mr. & Mrs. William Kohrs  
Mr. & Mrs. Scott Lessing  
Mr. & Mrs. James McLean  
Dr. Roger Melen & Ms. Arlene Camm  
Mr. & Mrs. David Mitchell Ph.D  
Mr. John Moragne & Ms. Kimberly Young  
The Pitchford Family  
Mr. & Mrs. Robert Plaschke  
Mr. & Mrs. Martin Putnam  
Mr. & Mrs. Sudhakar Ravi  
Mr. & Mrs. Jesse Rogers  
Mr. William Romans &  
Ms. Susan Barsamian  
Mr. & Mrs. Peter Rosekrans  
Mr. Raj Sandhu & Mrs. Mary Henry  
Mr. & Mrs. George Scalise  
Mr. & Mrs. William Stewart  
Ms. Tamra Tehaney  
Mr. & Mrs. John Thompson  
Mr. & Mrs. Craig Vought  
Mr. & Mrs. David Wilkinson  
Mr. & Mrs. Michael Wishart Sr.

**In-Kind**

Gordon Biersch Brewery,  
Mr. & Mrs. Dan Gordon  
Boething Treeland Farms  
Mr. & Mrs. Edward Kinsey II  
Mad Macs  
Mr. & Mrs. Mark Pitchford  
Portola Valley Garage  
Sugar Shack, Mrs. Susan Walsh Tinsley  
(SJSJ '79)  
Dr. Harry Whitehouse &  
Dr. Wendy Rabinov  
Mr. Dan Zastrow

---

## SCHOLARSHIP AND SPECIAL PURPOSE GIFTS

### **The Campbell Center for the Performing Arts**

Ms. Anne McGraw Morrical  
(SJSJH '77, SHP '81)

### **Learning Specialist Endowed Chair**

Mr. & Mrs. James H. Greene Jr.

### **SHP Fashion Show Senior Legacy Scholarship Fund**

Sacred Heart Prep Parents Association

### **SHS Specific Purpose Gifts**

Anonymous

Mr. & Mrs. James H. Greene Jr.

Mr. & Mrs. Fredric Harman

Mrs. Kristina Homer

Mr. & Mrs. Jesse Rogers

### **SHP Specific Purpose Gifts**

Mr. & Mrs. Fredric Harman

Mrs. Kristina Homer

Mr. & Mrs. Bradford Koenig

(Lauren Gray Koenig SJSJH '73, SHP '77)

Dr. Duncan Mason &

Ms. Deirdre McHugh (SHP '66)

Mr. & Mrs. Jesse Rogers

Sacred Heart Prep Parents Association

### **SJSJH Specific Purpose Gifts**

Mrs. Gay Batsitich Abuel-Saud (SHP '75)

Mr. & Mrs. Gary Ahern (Connie Blaine

Ahern SJSJH '77, SHP '81)

Mr. & Mrs. Laurence Akin

Mrs. Ann Fay Barry (SHP '62)

Mr. & Dr. Mehran Bashiri

Mr. & Mrs. Mark Basnage

Mr. & Mrs. Richard Bassin

Mr. & Mrs. Gary Beckman

Mr. & Mrs. Mark Bigley

Dr. & Mrs. Mark Byrne

Mr. & Mrs. Douglas Calderon

Dr. & Mrs. Kirk Churukian

Ms. Sharon Collins (Lone Mountain '69)

Mr. & Mrs. Charles Coulson

Mr. & Mrs. Kevin Coyne Sr.

(Stuart Hall '63)

Mr. & Mrs. David Dollinger

Mr. & Mrs. John Donahoe Sr.

Mr. Jon Duane &

Mrs. Cathy Friedman Duane

Mr. & Mrs. Bruce Dunlevie

Mr. & Mrs. Jeffrey Drazan

Mr. & Mrs. John Ertola (Alexandra Lucas

Ertola SJSJH '72, SHP '76)

Mr. & Mrs. Mark Flynn

Mr. & Mrs. Matthew Frome

Dr. & Mrs. Peter Gage

Mr. & Mrs. Patrick Gallagher

Mr. & Mrs. William Galliani

Mr. & Mrs. Brian Hamilton

Mr. & Mrs. William Harding

Mr. & Mrs. Kevin Harvey

Mrs. Renee Hellman

Mr. & Mrs. James Hinson (Mary Pang

Hinson SJSJH '72, SHP '76)

Mr. & Mrs. John Holloway (Anne Marie

Crowley Holloway SH Newton '73)

Mr. & Mrs. Bob Hopkins

Mr. & Mrs. Douglas Hosking (Laura

Hosking SH Broadway)

Mr. & Mrs. G. Thompson Hutton

Dr. & Mrs. Arthur Jollymour III

Kepler's Books and Magazines

Mr. & Mrs. Franz Krieg

Mr. Randy Lamb &

Mrs. Lisa Carey-Lamb

Mr. & Mrs. David Levison

Mr. & Mrs. Thomas Madrigal

Mr. Douglas Maduro &

Dr. Mary Ann Sarda-Maduro

Mr. & Mrs. Mike Maples

Dr. & Mrs. David Mauney

Mr. & Mrs. Brian Morgan

Mr. & Mrs. Paul Morin

Mr. Stanley Morrical

Mr. & Mrs. Daniel Myers

Mr. & Mrs. Sami Nawas

Mr. & Mrs. Christopher Nawn

Mr. & Mrs. Bryan Neider

The Nicholson Family Foundation

Mr. & Mrs. Guillermo Paganini

Mr. Kenneth Pelowski & Ms. Lori Mirek

Mr. & Mrs. James Pistorino

Mr. & Mrs. Robert Plaschke

Mr. Vincent Pluinage &

Mrs. Margaret Farrell

Ms. Lucinda Ramirez

Mr. & Mrs. Brendan Reidy

Mr. Garrett Roper & Ms. Afsaneh Akhtari

Dr. & Mrs. George Savage

Mr. Alan Salzman &

Mrs. Jillian Manus-Salzman

Mr. & Mrs. Douglas Schrier

Mr. & Mrs. Bruce Sewell

Mr. Hwang-Chi Shih & Mrs. Linda Chen

Mr. & Mrs. Bradley Smith

Mr. & Mrs. Stephen Smith

Mrs. Julie Spillane

St. Joseph's School Parents Association

Mr. & Mrs. Jose Suarez

Mr. & Mrs. Gary Swart

Mr. & Mrs. Lim Hock Tay

Mr. & Mrs. Thierry Thaire

Mr. & Mrs. David Thrasher

(Ann-Marie Leslie Thrasher SHP '85)

Mr. & Mrs. Ken Tinsley

(Susan Walsh Tinsley SJSJH '79)

Mr. & Mrs. Andre Touma

Mr. & Mrs. Todd Tuomala

Mr. & Mrs. Douglas VauDell

Mr. Joseph Vetter

Ms. Sara Vetter

Mr. & Mrs. Gregg von Thaden

Mrs. Amy Yang

Mr. Geoffrey Yang

Mr. Mark Zdeblick & Dr. Melanie Smitt

### Annual Fund Gifts-In-Kind

The Aitken-Young Family  
Mr. & Mrs. Brian Bell  
Mr. Terry Carlson &  
Mrs. Danielle Gaubert-Carlson  
Mr. & Mrs. Robert Chess  
Mr. & Mrs. Kevin Coyne Sr.  
Mrs. Nidia Dubria  
Mr. & Mrs. Dan Gordon  
Mr. & Mrs. Kevin Harvey  
Mr. Robert Hellman Jr.  
Ms. Marie Jackson  
Mr. Rick Jackson  
Joeseph George Distributor Inc.  
Mr. & Mrs. Tom Kavanaugh  
Mr. & Mrs. Bradford Koenig  
(Lauren Gray Koenig SJSH '73, SHP '77)  
Mr. & Mrs. James McLean  
Mr. & Mrs. Tobias Mellows  
Mr. & Mrs. Michael Moran  
Mr. & Mrs. Robert Swan  
Mr. & Mrs. Thierry Thaire

### Gifts-In-Kind

Mr. & Mrs. James Alexander  
Mr. & Mrs. Steve Andrighetto  
Mr. & Mrs. Phillip Bachler  
Mr. & Mrs. Patrick Brandin  
Broocker Painting  
Mr. & Mrs. Dan Brosnan  
Mr. Jonathan Burke  
Mr. & Mrs. Chi-Chao Chang  
Mr. & Mrs. John Denniston  
DPR Construction  
Early Bird Venture Capital  
East Palo Alto Home Depot  
Mr. & Mrs. Louis Ebner  
Mr. & Mrs. Robert Freitas  
Mr. & Mrs. Rex Golding  
Mr. & Mrs. Dan Gordon  
Gray's Paint  
Habitat for Humanity - Silicon Valley  
Mr. & Mrs. John Hansen  
Dr. & Mrs. Gary Hartman  
Mrs. Renee Hellman  
Mr. & Mrs. David Henry

Mr. & Mrs. Brad Henske  
Mr. & Mrs. Michael Higgins  
Mr. & Mrs. Bradford Koenig  
(Lauren Gray Koenig SJSH '73, SHP '77)  
Mr. & Mrs. James Labe  
Ladera Garden Center  
Mr. & Mrs. Eric Lamb  
Mr. & Mrs. Raymond Lane  
Mr. & Mrs. Michele Libraro  
Mr. Emmanuel Maceda &  
Ms. Maria Lourdes Rufino-Maceda  
Mr. & Mrs. Lorenzo Martinelli  
Medallion Rug Gallery  
Mr. & Mrs. H. Stephen Meisel  
Ms. Amity Millhiser  
Mr. & Mrs. Mike Mohrman  
Mr. & Mrs. Christopher Nawn  
Pharmacyclics, Inc.  
Mr. & Mrs. Robert Plaschke  
Mr. & Ms. Hans Plesman  
Dr. & Mrs. William Rhine  
Mr. & Mrs. Mark Robson  
Mr. & Mrs. Jesse Rogers  
Dr. Eric Rulifson & Dr. Salli Tazuke  
Mr. & Dr. Stephen Seabolt  
Dr. & Mrs. David Shen  
Mr. Jason Simpson & Ms. Rachel Prouty  
Mr. & Mrs. Armin Staprans  
Mr. & Mrs. Stephen Steppe  
Mr. & Mrs. Jose Suarez  
T & H Building Supply  
Mr. & Mrs. Thierry Thaire  
Mr. & Ms. Rogelio Trejo  
Mr. & Mrs. Craig Wallace  
Dr. Harry Whitehouse &  
Dr. Wendy Rabinov  
Mr. & Mrs. Ronald Wise  
Mr. & Mrs. Raymond Woo  
Mr. & Mrs. Ken Yagen

---

### TOWER CIRCLE MEMBERS

Ms. Patricia Baillargeon (SHP '45)  
Mrs. Ann Fay Barry (SHP '62)  
Mrs. Beata Bartholomay  
(SJSH '70, SHP '74)  
Mrs. Allanah Beh  
Ms. Kristina Bruning (SHP '60)  
Mrs. Florence H. Bryan  
(SJSH '38, SHP '42)  
Mrs. Alma Bryner (SHP '22)  
Mr. Harold De Luca  
Ms. Gail A. Gavello (SHP '60)  
Mrs. Ginger Glockner  
Mr. Robert F. Glockner  
Mrs. Lee Harnett (SHP '51)  
Mr. Marc Hebert  
Mrs. Stephenie Hebert  
Mrs. Lindsay A. Hill (SHP '76)  
Mr. Edward J. Hogan  
Mrs. Maryanne Hogan  
Mrs. Sheila Kiernan (SHP '44)  
Ms. Ursula Leonardi (SJSH '30)  
Mrs. Molly Linneman (SHP '59)  
Mrs. Jane Lotz (SJSH '44, SHP '48)  
Mrs. Linda Lynch  
Mr. Daniel J. McGanney (SJSH '65)  
Mrs. Cindra M. Nicholson (SHP '71)  
Mrs. Mary Katherine Porter  
(SHE '55, SHP '59)  
Mr. Bow Rodgers  
Mrs. Montye Rodgers  
Ms. Celeste L. Smith (SHE '63, SHP '67)  
Mr. Fred I. Sommer  
Dr. John Stoner III  
Mrs. Marianne Stoner  
Mrs. Elinor Swanstrom  
(SHE '56, SHP '60)  
Mrs. Mary F. Thompson (SHP '38)  
Ms. Mary Wallace (SJSH '74, SHP '78)

---

## TRIBUTE GIFTS

Gifts were received from these donors in honor of the following:

### In Honor of Abigail L. Dahlkemper

Mr. Andrew Dahlkemper  
Ms. Sue Dahlkemper

### In Honor of Mark T. Daschbach

The Daschbach Family

### In Honor of Richard A. Dioli

The Aitken-Young Family  
Mr. & Mrs. Robert Rench  
Mr. Thomas Wildman

### In Honor of James Everitt

The Aitken-Young Family

### In Honor of Kendall S. Flesher (SHP '11)

Mr. & Mrs. John Flesher

### In Honor of Ethel Fox

Ms. Christina Fox

### In Honor of Donna T. Gilboa

Ms. Ronni Gilboa & Ms. Betty Johanna  
Mr. & Mrs. Hal Korol

### In Honor of James H. Greene Jr.

Mr. James H. Greene III (SHP '04)

### In Honor of Marritje V. Greene

Mr. James H. Greene III (SHP '04)  
Mr. & Mrs. John Scheifly Jr.

### In Honor of Dwight W. Hobbs (SHP '07)

Mr. Malcolm Hobbs & Mrs. Jill Lee

## MEMORIAL GIFTS

Gifts were received from these donors in memory of the following:

### In Memory of Lila T. Abaunza de Bolanos (SHP '48)

Mr. Stewart C. Lotz &  
Mrs. Jane Hanley Lotz  
(SJSJ '44, SHP '48)

### In Memory of Marie Christine De Guigne De Dampierre (SHP 1900)

Marie C. De Dampierre Foundation

### In Memory of Joseph B. Ferrando

Mr. & Mrs. Daniel Beltramo Sr.

### In Memory of Anne Kennelly (SHP '67)

Munger, Tolles & Olson LLP

### In Memory of Dick Laughran

Mr. & Mrs. Greg Myall

### In Memory of Florian Marr

Mr. & Mrs. Melvin Kelln

### In Memory of Daniel J. McGanney (SJSJ '65)

Frank A. Campini Foundation

### In Memory of Zaira Paskovich

Mr. Ben Barnes &  
Ms. Nadine Taylor-Barnes

### In Memory of Sheila Sullivan Peterson (SHP '59)

Mr. & Mrs. Richard Cisne  
Mr. & Mrs. Donald Cravens  
Mr. & Mrs. Peter Dunston  
Mr. & Mrs. Ed Ehmke  
Ms. Mary Fisher  
Mrs. Jonathon Gifford  
Mr. & Mrs. Kevin Gillett  
Mrs. Marjorie Hansen  
Ms. Adelaide Iverson  
Mr. & Mrs. Jerry Marr  
(Betsy Barth Marr SHP '59)  
Mr. & Mrs. John O'Rourke  
Mr. & Mrs. Laurence Peterson  
Mr. Ronald Peterson  
Prudential Foundation  
Matching Gifts Program  
Mr. & Mrs. Robert Scheidtmann  
Mr. & Mrs. Edward Sickel III  
Ms. Suzanne Sickel (SJSJ '86)  
Mr. & Mrs. Larry Sullivan (SJSJ '81)  
Mr. & Mrs. Terry Ward

### In Memory of Norman Roger

Mrs. Maryanne Roger

**ENDOWMENT AND TEMPORARY RESTRICTED FUNDS CURRENTLY UNDER INVESTMENT**

**Scholarship Funds**

- Agape Foundation Financial Aid Scholarship \*
- Anne Cleary Kerns Memorial Scholarship Fund
- Albert J. Romeo Scholarship Fund
- Budd-Thanos Endowed Scholarship Fund
- Carlyse Franzia Ciocca Scholarship Funds
- Carmen M. Christensen Scholarship Fund
- Capital Campaign Fund
- Child Family Scholarship Fund
- Coyne Family Scholarship Fund
- Director's Scholarship Fund
- Edward E. Ford Endowment Fund
- Elaine Launer Scholarship Fund
- Erler Family Scholarship Fund
- General Scholarship Fund
- Haley Family Scholarship Fund
- Helen Costello Community Service Scholarship Fund
- Homer Family Scholarship
- Joseph J. Ciancaglini Scholarship Fund
- Josephine Spagnola Endowment Fund
- Kate Basile de Blois Scholarship Fund
- Koenig Family Scholarship Fund
- Louise Wilbur Bailey Scholarship Fund
- Maceda Family Scholarship Fund \*
- Marie C. de Dampierre Endowed Scholarship Fund
- Marini Kuo Scholarship Fund
- Mason Family Scholarship Fund
- McGlynn Family Scholarship
- Mildred Gordon De Vivo Scholarship Fund \*
- Mother Helen Costello Society Scholarship Fund \*
- The Pajaro Scholarship Fund \*
- Patricia Conley Larwood Scholarship Fund
- Pat and Kip Morey Scholarship Fund
- Roberts Scholarship Fund \*
- SHP Senior Fashion Show Scholarship Fund \*
- Schowe Family Scholarship Fund
- Sean C. McLarry Scholarship Fund
- Sister Joan McKenna Scholarship Fund
- Sister McGowan Endowed Scholarship Fund
- Sister Nancy Morris Scholarship Fund
- Student Assistance Fund
- Tom and Susan Ford Scholarship Fund

**Restricted and Special Funds**

- Aquatic Center Endowment Fund
- Agape Foundation Learning Specialist Chair
- Barbara Donohoe Jostes Fund \*

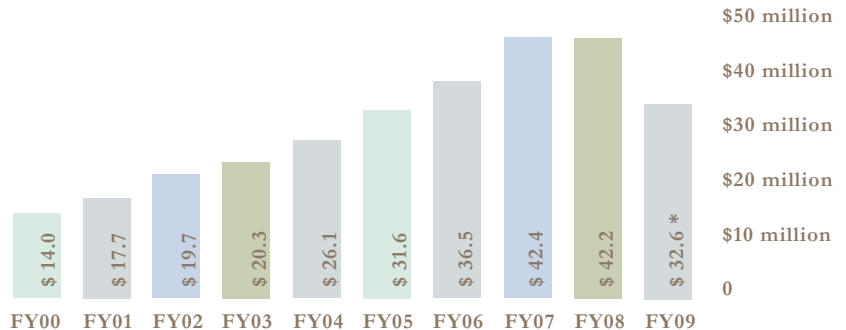
- Beatrix Mesmer Standish Library Fund
- Director's Opportunity Fund
- Dunlevie Chair for Music
- Edward E. Ford Professional Development Fund
- General Endowment
- Guy Letteer Chair for Physics
- SJSH Learning Specialist Chair
- Lilia and Camillo D'Ettore Grant Fund
- Lucille J. Fox Fund \*
- Marie C. de Dampierre Chair for Religious Studies
- Marie C. de Dampierre Fund for Religious Activity
- St. Joseph's Faculty Development Fund
- St. Joseph's Library Endowment

\* temporarily restricted funds

The Sacred Heart Schools Endowment supports scholarships, faculty development, and many other areas critical to the success and financial well-being of the schools. In 1995, the Board of Trustees adopted a four percent spending policy based on a three-year weighted average of the endowment's market value. Unless otherwise specified by the donor, a maximum of four percent is disbursed for school programs each year. The remainder is reinvested for continued growth as a hedge against inflation. The endowment is reviewed quarterly by the Investment Committee of the Board of Trustees.

**ENDOWMENT AND CURRENTLY RESTRICTED FUNDS**

(in millions unaudited)



\* The decrease in overall fund value from FY08 to FY09 reflects a combination of disbursements of over \$1.8 million for support of the school, additional gifts received during the year, and net investment performance. Report subject to audit.

## Ways to Give

At Sacred Heart Schools, Atherton we welcome and appreciate gifts of all sizes - the collective support of our many generous community members and friends provides the margin of excellence that distinguishes our school. Gifts to the Annual Fund support our yearly operating budget. These gifts help SHS maintain the programs and activities that are currently available to students. Gifts to the Capital Campaign are once in a lifetime opportunities that help Sacred Heart Schools build for the future in an extraordinary way. Please consider giving to both programs when considering a gift to SHS.

We are pleased to offer a wide variety of gift vehicles to help make supporting Sacred Heart Schools a rewarding experience. All gifts are tax-deductible in accordance with current tax laws.

If you would like assistance planning your contribution, please call the Development Office at 650.473.4003.

**Gifts of Cash (Cash, Check & Credit Cards)** Gifts of cash are the simplest method of giving. Checks should be made payable to Sacred Heart Schools.

**Gifts of Securities (Stock)** Donors should ask their broker to notify Sacred Heart Schools' Development Office of the gift and instruct the broker to await instructions from the school. For more information on how to transfer securities by mail, donors should contact the Development Office or visit our Web sites below. Alternatively, brokers may contact Sacred Heart Schools' broker:

Pflueger & Baerwald, Inc  
220 Sansome Street, Suite 700  
San Francisco, CA 94104  
415.421.4171

**Pledge Period** Pledge Period of Annual Fund gifts is for the current fiscal year (July 1 - June 30) while the pledge period for Capital Campaign Gifts may be paid over a three to five year period. Of course, Sacred Heart benefits if pledges are paid sooner, but we know that donors may need the extra time to give an extraordinary gift.

**Matching Gifts** Many corporations will match gifts to charitable institutions such as Sacred Heart Schools. These gifts allow you to double or triple your gift to the school. Ask your employer for a matching gift form.

Sacred Heart Schools, Atherton  
650.473.4003  
campaign.shschools.org  
www.shschools.org/giveonline

